

NWBOCA Membership Luncheon



CRCA Membership Luncheon

Rod Petrick, CRCA Industry Affairs Chair

&

Jim Peterson, Steep and Shingle Co-Chair



NWBOCA

Membership Luncheon Outline

- CRCA @ IL Energy Code Advisory Council
- IL Licensing Laws – Limited, Unlimited
- IECC 2012 Insulation Requirements
 - Clarifications – Insulation
- PIMA LTTR Changes
- New Illinois Law



CRCA @ IL Energy Code Advisory Council

- Purpose:
 - *‘Represent viewpoints of your industry as it relates to the business and issues before the Advisory Council’.*



CRCA @ IL Energy Code Advisory Council

- Lisa Mattingly, CDB
- Robert Coslow, CDB
- Ray Boosinger, CDB
- Don Plass, Building and Fire Code Academy
- **George Patterson, CRCA**
- Thomas Ayers, City of Rock Island
- John Meek, Felmley Dickerson Co.
- Bruce Maxey, BLDD Architects
- John Goetz, RD Lawrence Construction
- Ted Schieler, Sheiler & Rassi Quality Builders
- David Wytmar, Wytmar
- Ryan Nation, Hanson, Inc.
- Scott Dettmer, Dettmer Homes
- Tom Bucheit, Bric Partnership



CRCA @ IL Energy Code Advisory Council

- **IECAC Meeting – September 24, 2013**
 - ***2015 IECC Code Adoption***
 - ***Commercial Review – Aug. 1 to Nov. 30, 2014***
 - ***Residential Review – Dec. 1, 2014 – April 30, 2015***
 - ***CDB Review & Approval – May 2015***
 - ***2015 IECC Adopted in IL - 1/1/2016***
 - ***Concurrent Residential & Commercial Adoption***
 - ***CRCA Meetings with State 2013-2016***
 - ***'Energy Auditors' Educating Building Code Officials***



Roofing Contractor Licensing

Rod Petrick & Jim Peterson

- Limited vs. Unlimited
 - What's the difference?



Roofing Contractor Licensing

- IL Roofing License Types
- Definition: "**Limited roofing license**"
 - ...means a license made available to contractors whose roofing business is *limited to residential roofing, including residential properties consisting of 8 units or less...*



Roofing Contractor Licensing

- IL Roofing License Types
- Definition: “**Limited roofing license**”
 - ...means a license made available to contractors whose roofing business is **limited** and includes roofing on
 - ...**ONLY RESIDENTIAL PROPERTIES UP TO 8 units...**
- **Limited License - DOES NOT INCLUDE COMMERCIAL, INDUSTRIAL, INSTITUTIONAL STEEP SLOPE BUILDINGS...**



Roofing Contractor Licensing

- IL Roofing License Types
- Definition: "**Unlimited roofing license**"
 - ...means a license made available to contractors whose roofing business is *unlimited in nature* and includes roofing on *residential, commercial, institutional and industrial properties...*



Roofing Contractor Licensing

- **Exceptions** to IL Roofing Contractor License Law
 - Does not limit power of Municipality, City, County...
 - **Owners working on own Property**
 - Employees working on Employers Property
 - Glass Greenhouses, Farm Buildings



Roofing Contractor Licensing

- Subcontracting Issues
 - Licensed Contractor to Unlicensed?
 - Limited to Unlimited?
 - Unlimited to Limited?



Roofing Contractor Licensing Information Links

IL Licensing Violations & Penalties

- Troubles? Report

- Complaints

- <https://www.idfpr.com/dpr/FILING/Complaint.asp>

- IDFPR Website Complaint Forms

- <http://www.idfpr.org>

- <https://www.idfpr.com/dpr/FILING/Complaint.asp>

- How to Find Roofing Professions Licensed by IL DFPR

- <http://www.idfpr.com/dpr/who/roof.asp>

- Local Municipalities Enforcing – Local FINES



CRCA ACTIONS & NEW IL Energy Code

- Feb. 12 - CRCA Participated in IL Energy Advisory Council Teleconference
- Feb. 12 - CRCA Petition sent to IL Energy Advisory Council..referred to Joint Committee on Administrative Rules (JCAR), CDB as facilitator
- June 12 – CRCA Comments to JCAR
- Oct. 12 - CRCA Meets with CDB representatives
- Nov. 12 - CRCA Supports Clarifications as submitted by CDB
- Jan. 13 – Final Clarifications; D. Meyers @ CRCA
- **April/Sept. 13 – NRCA Proposals @ ICC**
- **June - Oct. 2013 - City of Chicago Discussions**



CRCA & NEW IL Energy Code

Commercial & Residential - Insulation

- IECC Insulation – Residential, +39% or +22%
 - 2006 - R-38, (but R-30 ‘Deemed to Comply...’?)
 - 2009 - R-38
 - 2012 – R-49
 - **2015 - ??**

CRCA & NEW IL Energy Code

Commercial & Residential - Insulation

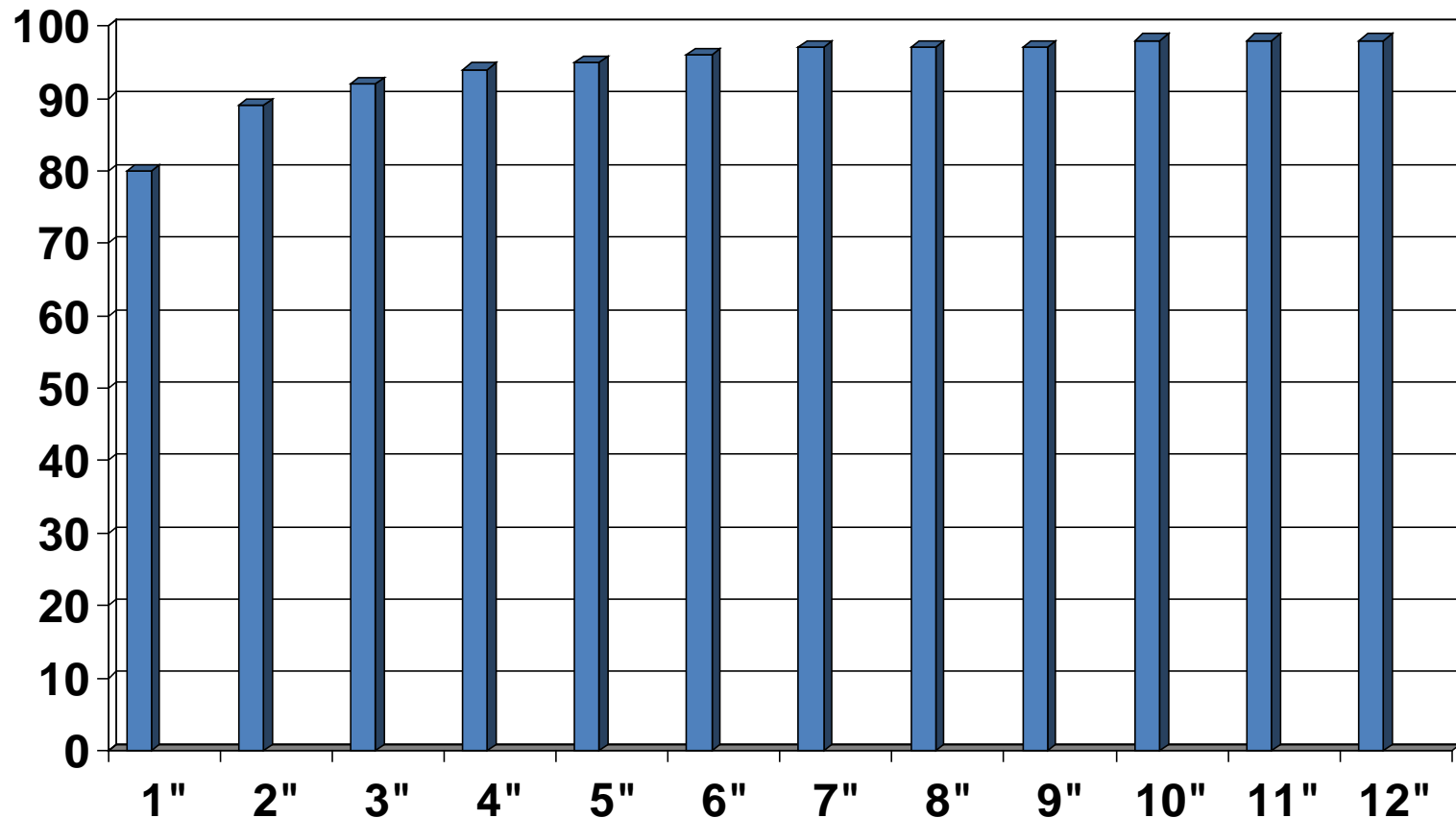
- IECC Insulation...Commercial, **Low Slope, +30%**
 - 2006 – R-15
 - 2009 – R-20
 - 2012 – R-25
 - **NEW 2015 – R-30**
 - **NEW NRCA STUDY....2014**

- **Does more insulation provide ROI ?**



Insulation Calculations?

- ❑ Total Heat Flow Reduction with Increased Insulation Thickness (Massave.com)



Insulation Effect Study

NRCA's Energy Wise Calculator

- ❑ Insulation Effect - Study – Energy Wise
 - ❑ 10,000 SF - Heating/Cooling costs
 - R-10 to R20 – Saved \$959
 - R-20 to R-30 - Saved \$293
 - Adding R-10 to R-20 = \$1.60/SF (\$10,600)
 - Adds 2" (R12.0) Insulation, Fastening, Labor \$1.60/sf
 - 54 year payback R20 to R-30 –
 - Roof Life - 20 years?
 - In New Construction – Makes sense
 - In Renovation Construction....??
 - Raise HVAC Units, Windows, Doors...
 - ❑ Source: NRCA Energy Wise Calculator



State of IL Insulation Clarifications

- Table 5.5-5 of Standard 90.1 allows commercial roofs in Illinois, with insulation entirely above deck, to be insulated to R-20 in lieu or the 2012 IECC requirement for R-25.
 - Therefore, both paths to compliance (IECC or ASHRAE Standard 90.1) are recognized compliance options
 - **FOR EXISTING BUILDINGS ONLY**



State of IL IECC Clarifications

- *The use of ASHRAE Standard 90.1-2010 as an alternative compliance path for commercial buildings is permitted....*
 - *For EXISTING BUILDINGS ...
AND NO FAÇADE CHANGE*
 - *ASHRAE 90.1-2010 – R-20*
 - *IECC 2012 – R-25*
 - *NO AIR BARRIER Required*

IL IECC Clarifications – TAPER

- **Q: When using tapered insulation where the insulation is close to zero thickness near a roof drain, is the required R-value [R-20ci from Table 502.2(1), Climate Zones 2-6, “Insulation entirely above deck”] taken as the average thickness over the entire roof or is the minimum R-value required at the roof drain together with the additional tapered thickness on top of that?**



State of IL IECC Clarifications

- A: Neither. The **minimum R-20ci** [Table 502.2(1), Climate Zones 2-6, and “Insulation entirely above deck”] applies to the area-weighted average U-factor (U-0.048 from Table 502.1.2) of the tapered insulation assembly. However, at no point (i.e., at roof drains) is **the thickness of insulation to vary more than 1-inch (25 mm) from the required minimum R-20ci.**



State of IL Air Barrier Clarifications

- EXISTING BUILDINGS
- ‘Put simply, **no continuous Air Barrier is required** when the extent of work is **limited solely to reroofing, roof recover, roof replacement as defined by the IBC**, and the Exceptions (1-8) itemized in Section C101.4.3, which permit a degree of compliance...subject to approval of the code official.’
 - State of IL Website...
[http://www.ildceo.net/dceo/Bureaus/Energy Recycling/FAQ-2.htm](http://www.ildceo.net/dceo/Bureaus/Energy_Recycling/FAQ-2.htm)



NEW LTTR Values

- IECC 2009 – R-20
- IECC 2012 – R-25
- **NEW IECC 2015 – R-30**
- **Add in New LTTR Calculations from PIMA and....**

From PIMA's website,

“In order to provide a comprehensive approach to predicting long-term R-value throughout North America, the updated ASTM C1289 standard now incorporates two test methods, ASTM C1303 and [CAN/ULC-S770-09](http://www.scc.ca/en/standardsdb/standards/25480), which offer a similar approach to predicting the long-term thermal performance for foam insulation materials that exhibit air and blowing agent diffusion or aging over time. Both test methods employ a technique called ‘slicing and scaling’ to accelerate this aging process and provide an accurate and consistent prediction of product R-value after five years, which is equivalent to a time-weighted thermal design R-value for 15 years. The update to ASTM C1289 in no way impacts Polyiso’s physical properties.” Can/ULC-S770-09 can be found at <http://www.scc.ca/en/standardsdb/standards/25480>

Revised LTTR Values - PIMA		Effective 1/1/2014
Thickness	New LTTR Values per inch thickness	New LTTR Values Per Thickness
1"	5.6	5.6
2"	5.7	11.4
3"	5.8	17.4
4"	5.9	23.6

SOURCE: Mark Graham, NRCA
Verify with Insulation Manufacturer



NEW LTTR Values

- As thickness increases, R-Value Decreases
- Dec. 31, 2012 ISO in Warehouse - 'R-6/inch'
- Jan. 1, 2014, Same ISO is 'R-5.6/inch'
- Approx 7% decrease in R reported
- Tapered Insulation Calculations?
 - Average at 2.5"??
- Clarify Proposals based on "inch thicknesses" rather than R-Value

NEW IL Energy Code SUMMARY

- Commercial Buildings – General
 - Air Barrier
 - Required in New Construction & Existing Buildings
 - **Clarifications – Not required for Existing Buildings – AHJ Approval Required**
 - Insulation
 - Increases IECC 2009 from **R-20** to IECC 2012 **R-25 – R-30 ??**
 - **Clarifications for Existing Buildings – AHJ Approval Required**
 - R-20 if blocking and flashings allow
 - Replace with like kind high 'R' value Insulation
 - Reflectivity
 - Chicago YES. .72 NEW, .50 AGED 3 Years.
 - Suburbs & Downstate NO...NOT NOW.



CRCA & NEW IL Energy Code

- State of IL Website – Clarifications
- General -
 - www.crca.org
 - [http://www.ildceo.net/dceo/Bureaus/Energy Recycling/FAQ-index.htm](http://www.ildceo.net/dceo/Bureaus/Energy_Recycling/FAQ-index.htm)
- Roofing Related
 - [http://www.ildceo.net/dceo/Bureaus/Energy Recycling/FAQ-2.htm](http://www.ildceo.net/dceo/Bureaus/Energy_Recycling/FAQ-2.htm)



New Illinois Laws 2014



Asphalt Shingle Recycling (SB 1925/PA 98-0296)

Allows IL Environmental Protection Agency to revoke Beneficial Use Determination permits for unlawful asphalt shingle recycling practices.

Determinations are permits authorized by the IEPA that allow waste materials to be recycled or otherwise used in a way that is beneficial to health and the environment.



Disposal of Asphalt Roofing Shingles (SB 2226/PA 98-0542)

Landfills cannot accept for disposal load of whole or processed asphalt roofing shingles (unless commingled with other construction material) if they are located within a 25 mile radius of an asphalt shingle recycling center.

In Addition,

- Recycling centers required to submit reports on amount of shingles received in a calendar year to the EPA
- Landfills are neutral on the amendment



Contractor Violations (HB 922/PA 98-0328)

Allows the Department of Labor to bring an action against a contractor up to five (currently two) years after a violation of the Prevailing Wage Act is alleged to have occurred.

Requires:

- Contractors and subcontractors who participate in public works projects to keep records for five (currently three) years.
- A public body to keep records for five (currently three) years.

Authorizes contractors to retain record in electronic (currently paper) format.



Subcontractors (HB 923/PA-0105)

Requires contractors to report payments to any subcontractors or independent contractors to the Department of Labor.

Legislation was strongly opposed because it is:

- Drafted to apply only to non-union contractors
- Viewed as an additional burden on small businesses, requiring them to disclose proprietary information on what they pay their business partners – information that is not required to be disclosed by other employers.



**Free
Subscription**

www.CRCA.org

**Get the latest
updates on
codes,
legislation and
more!**

CRCA TODAY WINTER 2014

The Magazine of Roofing and Waterproofing in Chicago and Beyond

CRCA 31st Annual Trade Show & Seminars

Time to Pay Up

What's Up With Polyisocyanurate Insulation R-Values?

Requirements for Rooftop Garden

Chicago Roofing Contractors Association

Free to attend!

Earn CEU's

Register Today
www.CRCA.org

"Decoding Roofing & Waterproofing Today"

**Drury Lane
Oakbrook Terrace**

January 23-24, 2014



**CRCA Roofing Industry
Trade Show & Seminars**