

CRCA TODAY

FALL 2022

The Magazine
of Roofing and
Waterproofing
in Illinois
and Beyond

2023 CRCA Trade Show Preview
Parapets—Where Roof Meets Walls
Delay of Claims—Part 2
Retractable Lanyards—Change is Coming



Chicago Roofing
Contractors Association

CRCA TODAY | 4415 W. Harrison St., #540 | Hillside, IL 60162

WE GUARANTEE YOU LESS

Less money on repairs
Less water damage
Less stress and wasted time
~~Less~~ **NO** leaks we can't handle



SMART EX®
BY PRO GEO

WITH ILD'S SMART ROOF SOLUTIONS, LESS IS DEFINITELY MORE

ILD's premium monitoring systems take the guesswork out of whether your roof is watertight. They work continuously day and night, always on the lookout for a breach. When the slightest leak is detected, you are alerted right away, saving you time, money, aggravation and water damage.

**Three new ILD systems.
One perfect for you.**

**Toll Free: 1.866.282.5325
info@leak-detection.com**

**TRUSTED BY
THE BEST.**



CRCA TODAY

FALL 2022

www.CRCA.org



FEATURES

Fall Protection Retractable Lanyards . . . Changes Are Coming . . .	5
Parapets—Where Roofs Meet Walls.....	8
Delay Claims, Part 2: Types of Damages and How to Calculate Them.....	15
39th Annual Trade Show & Seminars	17
Can a Contract Be Enforced Without a Countersignature?	20
Industry News	23
CRCA Contractor Members.....	28
CRCA Associate Members	30



Advertising Contact: Contact CRCA's Office for information at 708-449-3340 or info@crca.org.

Reprints: *CRCA Today* has extra Magazine reprints available to CRCA Members for a limited time, limited quantity, for free. Contact info@crca.org. Reprints are available from CRCA headquarters; 1-100- \$.95/issue; 101-500 - \$.90/issue; 501-1000 - \$.80/issue; 1000+ - \$.70/issue. All shipments FOB 4415 W. Harrison St., Suite 540, Hillside, IL 60162.

Online: Archived *CRCA Today* available at <https://crca.org/resources/crca-today-magazine>.

On the Cover: Photo courtesy of CRCA Contractor Member Sterling Commercial Roofing and CRCA Associate Member Arcon and Associates, showcasing the Northern Illinois University Stevenson Towers Project. This roof replacement included a Grey TPO Fully Adhered Roofing System manufactured by CRCA Associate Member Versico.

Copyright ©2022, CRCA, Chicago Roofing Contractors Association

CRCA TODAY

FALL 2022

CRCA 2022 Board of Directors

Mitch Rabin, President
A-1 Roofing Company, Elk Grove Village, IL

Kevin Froeter, 1st Vice President
Sterling Commercial Roofing, Sterling, IL

Dominic Dunlap, 2nd Vice President
DCG Roofing Solutions, Inc., Melrose Park, IL

Larry Marshall, III, Treasurer
L. Marshall Roofing & Sheet Metal, Inc.

Jim Prusak, Secretary
Prusak Construction & Roofing, Inc., Bridgeview, IL

Mark Duffy, Immediate Past President
Elens & Maichin Roofing & Sheet Metal, Joliet, IL

Matt Adler, Director
Adler Roofing & Sheet Metal, Inc., Joliet, IL

Kevin Filotto, Director
Filotto Roofing, Crest Hill, IL

Casey Fraher, Director
Crowther Roofing & Sheet Metal, Romeoville, IL

Dan Henshaw, Director
G.E. Riddiford, Co., Arlington Heights, IL

Mark Moran, Director
Knickerbocker Roofing & Paving Co., Harvey, IL

Bill O'Brien, Jr., Director
Combined Roofing Services LLC, West Chicago, IL

Ryan Petrick, Director
Ridgeworth Roofing Co., Inc., Frankfort, IL

Bob Prette, Director
Tidwell Roofing & Sheet Metal, Elk Grove Village

Shawn Sullivan, Director
Olsson Roofing Company, Inc., Aurora, IL

Associate Directors

Joan Crowe, Associate Director
GAF, Downers Grove, IL

Dave Good, Associate Director
Bone Roofing Supply, Addison, IL

Mike Lowery, Associate Director
A & D Products, Naperville IL

Bill McHugh, Executive Director
Chicago Roofing Contractors Association, Hillside, IL

Subscription information:

To subscribe, visit www.crca.org, click on CRCA Today, subscribe. For article submissions, information, contact CRCA at 708-449-3340 or e-mail info@crca.org. To unsubscribe, email info@crca.org, unsubscribe to CRCA Today.

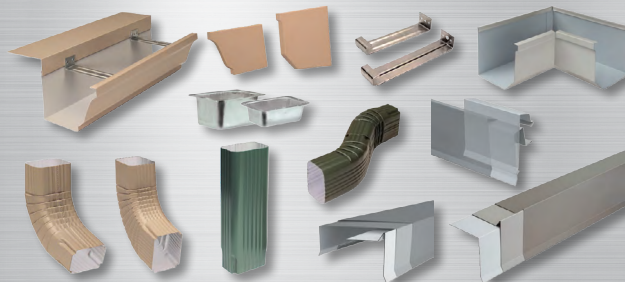
CRCA Today, Volume 11, No. 3, is published quarterly by the Chicago Roofing Contractors Association. Information has been obtained from sources believed to be reliable. However, because of the possibility of human or mechanical error by our sources, the Chicago Roofing Contractors Association does not guarantee the accuracy or completeness of any information and is not responsible for any errors or omissions of the results obtained from use of such information. The publisher reserves the right to censor, review, edit, reject or cancel any materials not meeting the standards of CRCA Today.

Editorial Contributions: You are invited to share your expertise and perspectives. Before writing, visit <https://crca.org/resources/crca-today-magazine>, or contact CRCA at info@crca.org for writing guidelines & policies.

ADVANCED ARCHITECTURAL

SHEET METAL & SUPPLY

We service your needs with consistent quality, workmanship and knowledge



It's part of the reason customers come back to us time after time.

Maximize your profits by decreasing your inventory.
Reduce man hours - let us fabricate, you install.

98% of our American-made products are made-to-order and are manufactured inhouse. Our products are made from domestic metal and custom crafted to your specifications.

Contact us today to see how we can streamline your process and maximize your profits!

(231) 861-0050 | info@advarchsm.com | www.advarchsm.com



METAL DECK REPLACEMENT?

WE HAVE IT IN STOCK NOW!

YOUR ONE-STOP METAL DECK SHOP!

VISIT US AT BOOTH #702

CONTACT US TODAY FOR THE BEST SERVICE AND LEAD TIME



LARGEST INVENTORY IN STOCK FOR IMMEDIATE USE



PICK UP OR DELIVERY



VARIETY OF DECK IN STOCK NOW



CUT TO LENGTH



KNOWLEDGEABLE STAFF

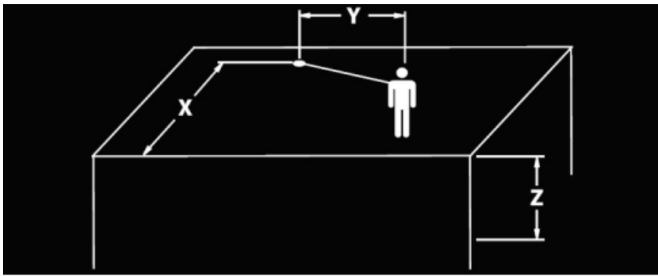
PROUD MEMBER



VISIT OUR WEBSITE FOR OUR METAL DECK 101 VIDEOS IN ENGLISH AND SPANISH

630.978.7800 | SALES@METALDECKSUPPLY.COM

www.METALDECKSUPPLY.COM



CLASS 2 Illustration of Axes Example

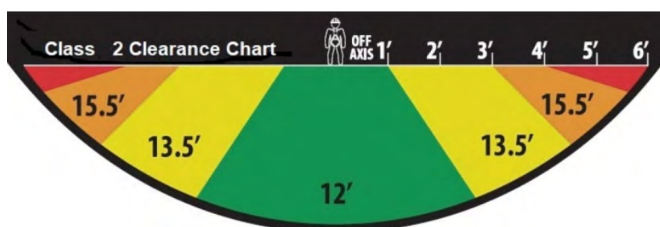
- Updated: Static Strength Test—All SRDs must be capable of withstanding a 3,600 pound (16kN) static load for one minute with the lifeline constituent fully extracted. Previous Revision: 2014 revision was a 3,000 pound (13.3kN) static test.
- New: SRDs that do not incorporate an internal braking system must hold a minimum 1,800 pound (8kN) static load while the brake pawls or other brake activation system is engaged and locked with at least 75% of the lifeline constituent remaining on the drum assembly.
- New: SRL-P devices with twin or dual legs must hold a 3,600-pound (16kN) load applied from leg to leg.
- New: SRL-P devices designed to wrap around an anchorage or tie back onto themselves must hold a load of 3,600 pounds (16kN) applied after completion of 2,500 cycles of abrasion testing with the lifeline constituent wrapped around a testing I-beam fixture.
- New: SRL-P and Class 2 devices DO NOT need to retract after the overhead dynamic performance tests.
- New: Class 2 SRL-P devices shall include a clearance requirement label

- and a 6 foot (1.8m) free fall and keep the MAF at 1800 pounds (8kN) or less. (lifeline does not get pinned or restrained to prevent retraction).
- New: Class 2 SRD must pass a dynamic test over an edge with a 310 (140kg) pound weight and the AAF must not exceed 1350 pounds (6kN) and MAF not exceed 1800 pounds (8kN) ambient and AAF 1575 pounds (7kN) conditioned.
- New: SRL-R function tests are the same but static testing when in retrieval mode is now 3600 pounds (16kN).
- New: SRLs with internal brakes must pass a test with the lifeline shortened to 42 inches (1,067mm), then have 36 inches (914mm) +/- 1.0-inch (25mm) clipped out, then have a 310-pound (140kg) weight free falling 2 feet (.6m) and must maintain MAF at 1800 pounds (8kN) or less.
- Updated: SRL-P and Class 2 devices can only have up to 48 inches (1,219mm) of line outside the SRL housing when fully retracted. Previous Revision: 60 inches (1.5m).
- New: Warning card is required to be provided as a separate card insert with each SRD


WARNING: This Class 2 self-retracting device, when attached to a foot-level anchorage, poses significant risk of injury. The user, the competent person and/or qualified person should all acknowledge that normal use of this device MAY NOT PREVENT A SERIOUS INJURY.

Failure to follow all manufacturer's instructions and warnings may result in serious injury or death.

(3M,2022)



- Updated: During ambient dynamic performance testing utilizing a 310-pound (140kg) test mass, the average arresting force (AAF) allowed has been increased from 900 (4kN) to 1350 (6kN) pounds and the arrest distance (AD) has been shortened to 42 inches (1,067mm). For the conditioning tests, AAF remains at 1575 pounds (7kN), but the AD is now 42 inches (1,067mm). Previous Revision: Both ADs are down from 54 inches (1,372mm) with conditioning temperatures and times remaining same as previous.
- New: SRL-P devices must pass a dynamic performance test with a 310-pound (140kg) weight

Making sure you have the right fall protection equipment for the task at hand is a vital component to any fall protection plan. Revisions to existing ANSI standards, like the one listed above, adds to the due diligence required for creating effective and accurate fall protection plan. For further information regarding these revisions, please reach out to the CRCA Safety Committee. 

References:

- <https://multimedia.3m.com/mws/media/2093504O/3m-ansi-assp-z359-14-2021-standards-update-summary.pdf>

Frank Marino is Vice President at Safety Check Inc., a safety consulting firm in the Chicago area and CRCA Associate Member. Marino has extensive experience in roofing safety and is a co-chair of the CRCA Health and Safety Committee. He is a member of the Occupational Environmental Safety & Health Advisory Board at the University of Wisconsin, working with faculty and safety professionals on curriculum development and industry updates. He can be reached at fmarino@safetycheckinc.com.



MEET THE *NEWEST* LADDER SAFETY DEVICE

- *EASY INSTALLATION*
- *MULTIPLE MOUNTING
OPTIONS*
- *LIGHTWEIGHT*
- *SECURES LADDER FROM
DISPLACEMENT*



SCAN HERE OR LEARN MORE
AT [LADDER-LATCH.COM](https://ladder-latch.com) FOR
RETAILERS & INFORMATION

LADDER LATCH



CONTACT US

JAKE MALLEIN | INSIDE SALES
M. (913) 406-4655 | E. [JAKE@SJMALLEIN.COM](mailto:jake@sjmallein.com)

Parapets—Where Roofs Meet Walls

By Joe Lstiburek



Joe Lstiburek

Historically there have been so many problems with parapets that we have a name for it: “parapetitus”. They have a long history—which of course is not always clear—which allows me to embellish without threat of peer review reversal¹. Their major function today, aside from confusing architects, is to protect

the edge of roof assemblies from wind uplift forces. Not so in the old days where they were useful in fire protection.

When wind blows against a building it produces vortices at the roof edges (Figure 1) that create huge pressure differences (Figure 2) at roof perimeters that can suck roofs off buildings. Parapets dramatically reduce these pressure differences at roof edges (Figure 3). Neat eh? All this from a University of Toronto guy, go Varsity Blues (Leutheusser, H. J., 1964)²

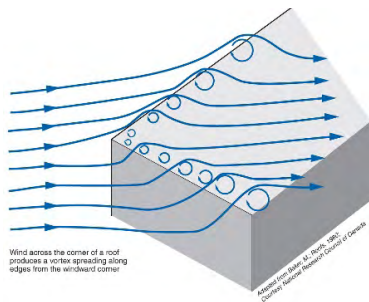


Figure 1—Roof Edge Wind Effects: When wind blows against a building it produces vortices at the roof edges.

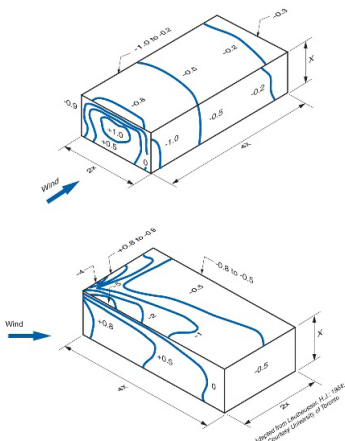


Figure 2—Pressure Differences: Notice the large pressures at roof perimeters. From Leutheusse² and the Department of Mechanical Engineering, University of Toronto, 1964. Some of us recall that 1964 was a good year—the Toronto Maple Leafs won the Stanley Cup. Tim Horton played defense on that team, long before he got into the donut business.

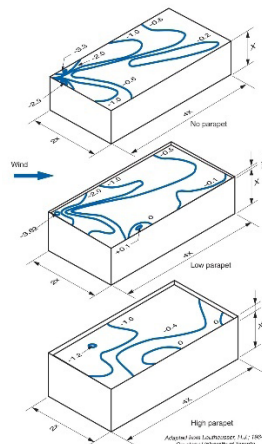
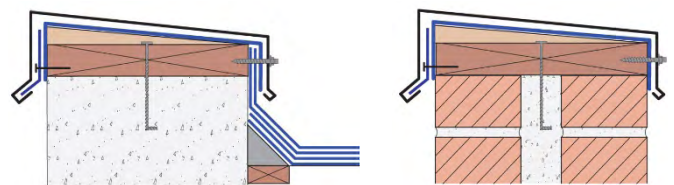


Figure 3—Effect of Parapets on Pressure Differences: Parapets dramatically reduce these pressure differences at roof edges. This is from a beautiful bit of work from Leutheusser at my alma mater the University of Toronto. Of course, this happened in 1964, more than a decade before I got there. I am old, but not that old.

The easiest thing to get right about parapet construction is to keep rainwater from getting into the top of them. The principles are easy. Slope the top of them inward so they don’t stain the building façade. Make sure that there is a waterproof membrane under the coping. Always. Metal and stone copings leak at joints. And always have drip edges—front and back—so that they don’t stain the building façade. Did I mention the staining of the building façade? Check out Figure 4 and Photograph 1 to see it done right. If you want to get depressed, look at Photograph 2.

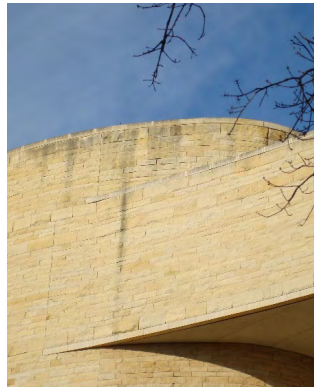


Adapted from Baker, M.; Roofs, 1980; Courtesy National Research Council of Canada

Figure 4—Parapet Water Management: Keep rainwater from getting into the top of them. Slope the top of them inward so they don’t stain the building façade. Make sure that there is a waterproof membrane under the coping. And always have drip edges—front and back—so that they don’t stain the building façade.

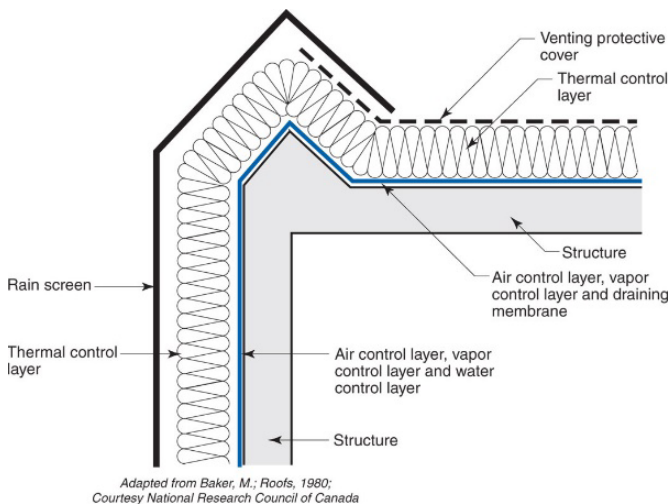


Photograph 1—Excellent Water Management: Notice the membrane under the coping. Notice the slope to the interior. And, notice the drip edges.



Photograph 2—Stains at Parapet: No drip edges. A beautiful building is becoming ugly.

Are we done yet? Nope, not by a long shot. Now it gets weird, not the physics, but why so many buildings get the physics wrong. For the physics we go to another one of those legendary old guys who got it right and made it simple for the rest of us to understand—Max Baker. Check out Figure 5, adapted from his book “Roofs”. Connect the water control element/layer of the roof to the wall, the air control element/layer of the roof to the wall, the vapor control element/layer of the roof to the wall and finally the thermal control element/layer of the roof to the wall. Sound familiar? Coming from me it should by now². I call them the “Baker Principles”.



Adapted from Baker, M.; Roofs, 1980; Courtesy National Research Council of Canada

Figure 5—Parapet Physics: The “Baker Principles”. Adapted from the master, Max Baker.¹ Adapted how? I just updated the words, just the words, not the principles. Everyone relax. This is probably the most influential graphic in my building science education. When I first saw it the light bulb went off. Continuity of the control layers between roofs and walls is the whole enchilada.

This is what we typically get in the “real world” today (Figure 6). What a mess. No continuity of the four principle control layers:

- Water control layer—no membrane under the parapet flashing
- Air control layer—no air control in either the roof assembly or the wall assembly
- Vapor control layer—same goes for the vapor control layer
- Thermal control layer—thermal bridging everywhere

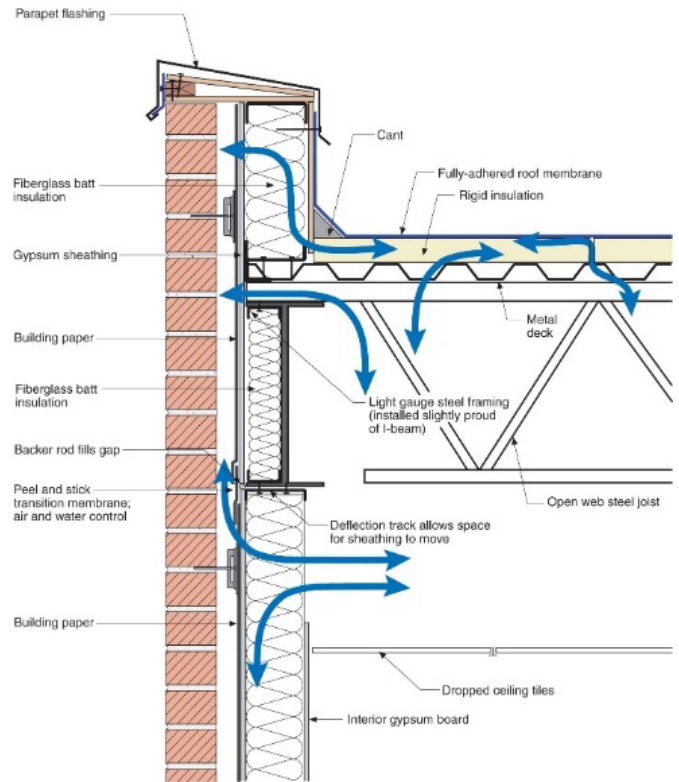


Figure 6—Problem Parapet: This is what I see on a regular basis.

Everything is wrong. Air leakage into and out of everything and everywhere. No membrane under the parapet flashing. No air control in either the roof assembly or the wall assembly. No vapor control layer and thermal bridging everywhere.

And to make matters worse, structurally we also tend to have some issues. Ah, but not in the way you think. Think about the thermal stress a roof membrane goes through (Figure 7 and Figure 8). The key is to transfer these stresses to the roof deck. In the old days, it was easy, just fully adhere the roof membrane with a lot of goop directly to the structural deck so that each square foot of roof membrane stress was directly transferred to the square foot of structural deck directly under the membrane. No problem. Until, wait for it, some lunatic person introduced thermal insulation. Now we had to transfer the stress of the membrane through sometimes multiple layers of insulation before it got to the structural deck (Figure 9). If you didn't get it right, you concentrated the stresses at roof edges and you could suck in a parapet (Figure 10) or tear or rip a membrane at the parapet (Photograph 3 and Photograph 4).

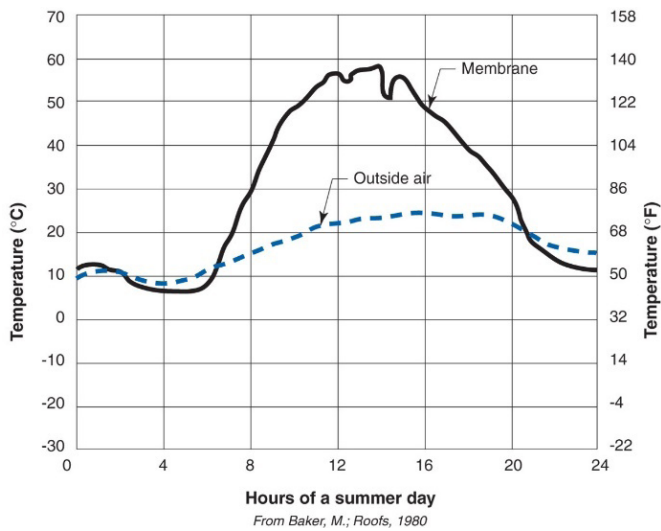


Figure 7—Roof Membrane Temperatures: Ottawa, Canada, summer day. Courtesy of Max Baker and the National Research Council of Canada.¹

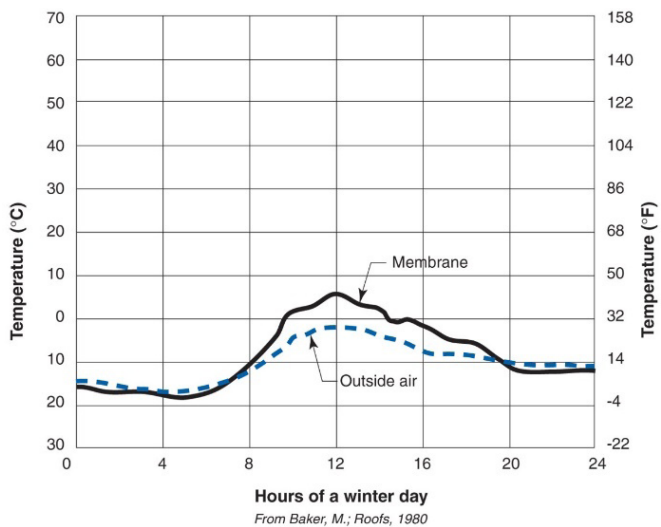


Figure 8—Roof Membrane Temperatures: Ottawa, Canada, winter day. Courtesy of Max Baker and the National Research Council of Canada.

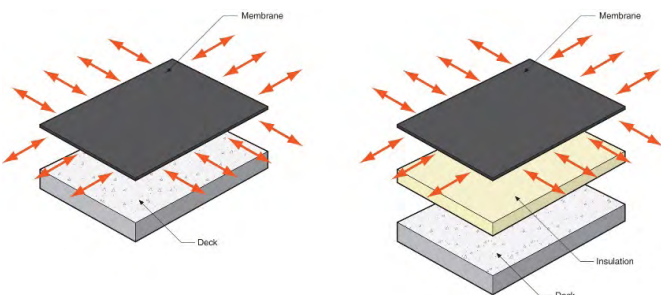


Figure 9—Transferring the Thermal Stress: Easy to do when the membrane is adhered directly to the structure. Not so easy when you have insulation, or worse, multiple layers of insulation between the membrane and the structure.

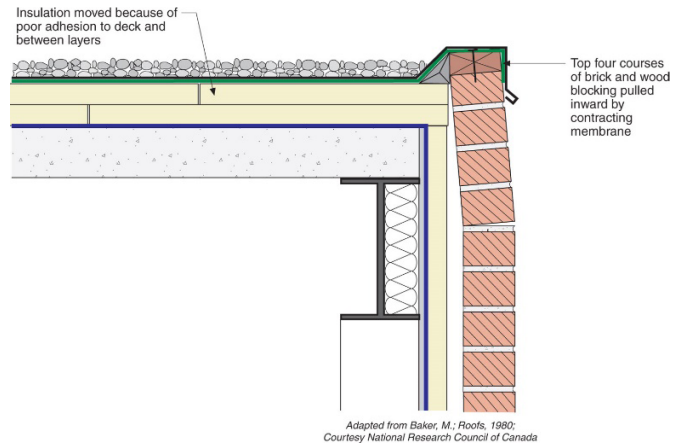


Figure 10—Collapsed Parapet: A parapet having a bad day.



Photograph 3—Membrane Shrinkage: Notice the roofing membrane being pulled away from the cant strip.



Photograph 4—Tear in Membrane: Membrane shrinkage results in the membrane pulling apart.

Transferring loads in multi-layer compact roofs is quite controversial. There are lots of opinions and I want to point out right from the start, that only I am right. Let's start out in the field of the roof. This is how a compact roof should be constructed if I was in charge (Figure 11). There should be a continuous fully adhered air control layer supported by gypsum sheathing on the top of a metal deck³. The gypsum sheathing is screwed to the metal deck. There should be a whole bunch of rigid thermal insulation on the top of this air control layer—in two layers at least with the joints off-set horizontally and vertically⁴. This insulation should be screwed down to the metal deck. Then on top of the rigid thermal insulation there should be a coverboard. This coverboard is also screwed down to the metal deck. Finally, a roof membrane is fully adhered to the coverboard.

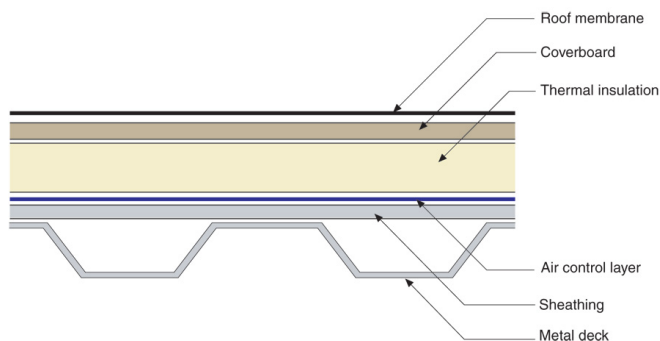


Figure 11—Perfect Compact Roof: The roof I would build if I was in charge. A continuous fully adhered air control layer supported by gypsum sheathing on the top of a metal deck. The gypsum sheathing is screwed to the metal deck. Rigid thermal insulation on the top of this air control layer—in two layers at least with the joints off-set horizontally and vertically. This insulation should be screwed down to the metal deck. Then on top of the rigid thermal insulation there should be a coverboard. This coverboard is also screwed down to the metal deck. Finally, a roof membrane is fully adhered to the coverboard.

The function of the coverboard is two-fold. First, it is a hygric buffer that reduces roof membrane blistering. A discussion of this has to wait for some other time. Second, and most important to our story, is that its function is to transfer the stresses of the primary roof membrane to the metal deck. Stresses from the roof membrane are transferred to the coverboard and the coverboard does the heavy lifting and handles these stresses finally getting them down to the metal deck.

Next, we have to deal with the potential for concentrated roof stresses at parapets. Figure 12a shows how the “old timers” did it—wood blocking and a cant anchored to the structural deck. Figure 12b shows how the “new pups” do it—a large backer rod supporting a bunch of extra membrane that lets things move when they have to move. As much as it pains this “old timer” to say this, with the newer more dimensionally stable membranes the “new pups” have it more right.

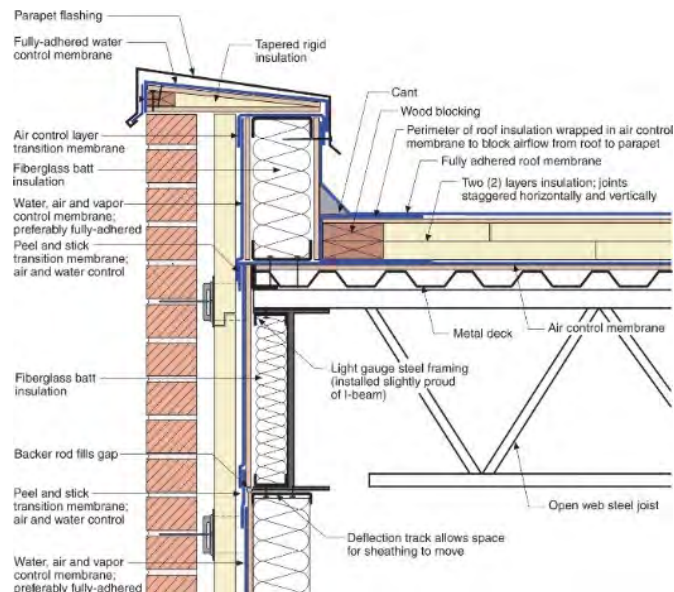


Figure 12a—Steel Stud Parapet “Old Timer”:—Wood blocking and a cant anchored to the structural deck restrains membrane shrinkage at parapet. Notice the continuity of the control layers.

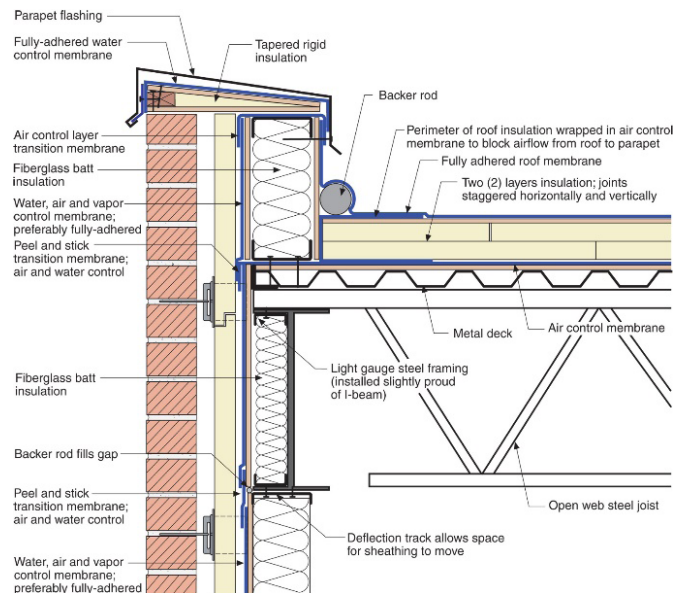


Figure 12b—Steel Stud Parapet “New Pups”: Large backer rod supporting a bunch of extra membrane that lets things move when they have to move. The “Zen” approach to membrane movement. Use a more dimensionally stable membrane and then let things move when they have to. Again, notice the continuity of the control layers.

Now on to the continuity stuff. All we have to do is apply the Baker Principles (See Figure 5) to typical roofs and walls. To that end, with the help of my colleagues at the Skunk Works at Building Science Corporation, I have drawn up a few of the more common parapet constructions following the “Baker Principles”: the already discussed Steel Stud Parapet (Figure 12b), the Masonry Parapet (Figure 13), the Balloon Framed Steel Stud Parapet (Figure 14) and finally the Cantilevered Mini Parapet (Figure 15).

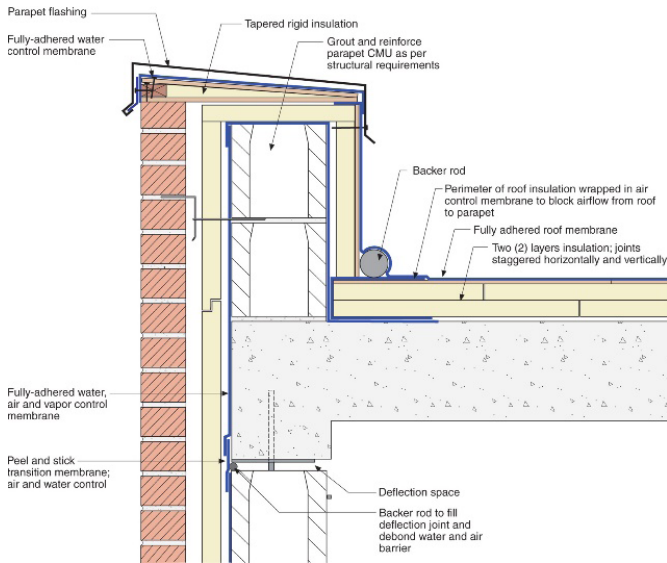


Figure 13—The Masonry Parapet: The thing to note here is that the concrete deck itself is the air control layer and so an additional one is not necessary. However, joints in the concrete deck need to be addressed for air control layer continuity.

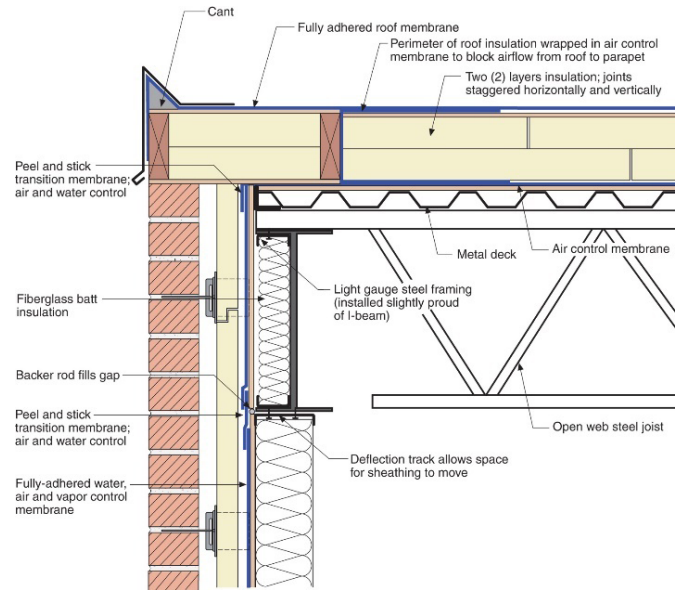


Figure 15—The Cantilevered Mini Parapet: Notice that air control layer continuity is achieved by wrapping the membrane over the building corner and then constructing the cantilevered portion of the parapet over the top of this air seal.

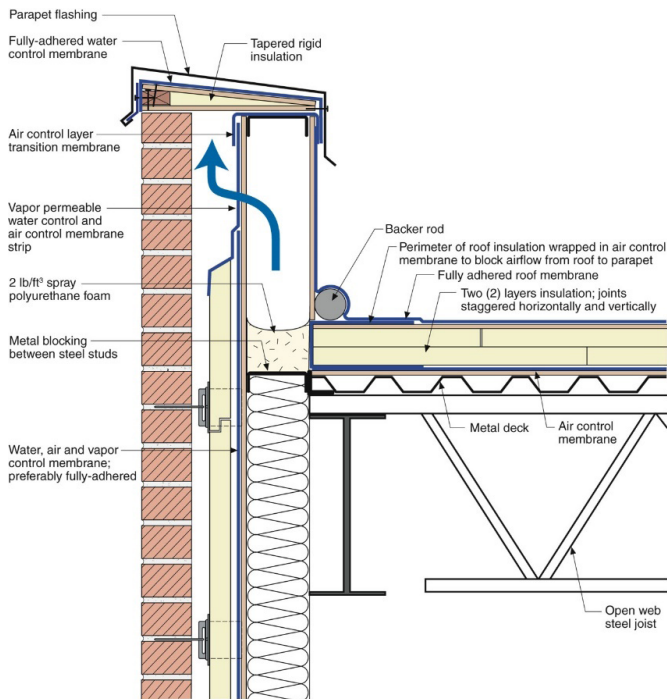



Figure 14—The Balloon Framed Steel Stud Parapet: This is the ugliest parapet to get right. Notice the use of spray polyurethane foam, the high density stuff, to provide air control layer continuity across the balloon framed exterior steel stud wall. The spray foam is supported by horizontal bridging or metal blocking. This is a tricky thing to execute and as such we design into the upper parapet assembly a pathway for drying via vapor diffusion to provide some performance redundancy.

All of the “good” series of parapet details presented follow the “Baker Principles” and a little bit of other stuff (See Figure 12a, Figure 12b, Figure 13, Figure 14, and Figure 15):


- Water control layer continuity—membranes continuous under the parapet flashing
- Air control layer continuity—an air control layer in the roof assembly is connected to the air control layer in the wall assembly
- Vapor control layer continuity—a vapor control layer in the roof assembly is connected to the vapor control layer in the wall assembly
- Thermal control layer continuity—the thermal control layer of the roof assembly is connected to an effective thermal control layer in the wall assembly. The thermal control layer in the wall assembly is exterior to the structure—just as in the roof assembly.
- The roof membrane is fully adhered to a coverboard that is mechanically attached to the structural deck in the field of the roof and an allowance for membrane movement is provided at the perimeter of the roof assembly.

The perimeter of the roof assembly insulation is wrapped to prevent interstitial airflow from the parapet into the multilayered rigid insulation of the field of the roof.

The cure for “*parapetitus*” is continuity of the control layers and letting things move when they have to move. Max Baker and Stonewall Jackson would be proud. 

Footnotes:

1. The Italians have claim to the word: "parapetto" comes from "parare" which means "to defend" and "petto" which means "breast". The military calls "parapet fortifications"—defensive stonewalls - "breastwork". The dictionary meaning of "breasted" means "to confront boldly". So, low stonewalls historically, are called parapets and are military in origin. "Stonewall Jackson" was also called "Parapet Jackson"—ok, so that's not true, but with the way textbooks seem to be written today I bet I could get away with it if I decided to write one. So how did they come to be located on the edge of roofs? Ah, we can thank the English for that. In the old days, London tended to keep burning down and that tended to irritate the folks who lived in London so projecting wooden eaves were banned in the Building Act of 1707 as a fire risk. Instead, an 18-inch brick or stone parapet was required, with the roof set behind, as fire protection (<http://en.wikipedia.org/wiki/Parapet>).
2. Check out "BSI-001: The Perfect Wall": <http://www.buildingscience.com/documents/insights/bsi-001-the-perfect-wall?topic=doctypes/insights> It was my first column for ASHRAE and it was inspired by Max Baker's marvelous book: *Roofs*¹, 1980, Montreal: Polyscience Publications. The book, now out of print, was sponsored by the National Research Council of Canada and it brought together information into one document from Canadian Building Science Digests, Research Papers and Building Science Seminars and Workshops from the Division of Building Research. Much of this information is online and folks should go visit: <http://www.nrc-cnrc.gc.ca/eng/ibp/irc/publications/index.html>. Awesome.
3. For a more interesting discussion about the need for air barriers in compact roof assemblies check out "Uplifting Moments-Roof Failures" at <http://www.buildingscience.com/documents/insights/bsi-019-uplifting-moments-roof-failures?topic=doctypes/insights>
4. To more fully appreciate the need to offset the rigid insulation joints horizontally and vertically and to wrap the perimeter of the roof assembly insulation check out "Complex 3D Airflow Networks" or <http://www.buildingscience.com/documents/insights/bsi-036-complex-three-dimensional-air-flow-networks?topic=doctypes/insights>



BENNETT & BROSSIEAU
ROOFING INC.
Rising Above The Rest

24/7 Availability

General Roof & Emergency Roof Repairs
Reroof, Replacement, New Construction
Roof Inspections and Comprehensive Reports
Custom Preventative Roof Maintenance Programs

**STANDING SEAM, SLATE, SHINGLES, GARDEN/GREEN ROOFING
TPO, EPDM, BUILT-UP, MODIFIED**

COMMERCIAL - INDUSTRIAL - INSTITUTIONAL

1-800-339-8327

Illinois Roofing License # 104-000207

References

1. Baker, M.C., Roofs, ISBN 0-921317-03-4, Polyscience Publications, Montreal, Quebec, 1980
2. Leutheusser, H. J., The Effects of Wall Parapets on the Roof Pressure-Coefficients of Block-Type and Cylindrical Structures, University of Toronto, Department of Mechanical Engineering, TP 6404, April, 1964

Joe Lstiburek, B.A.Sc., M.Eng., Ph.D., P.Eng., is the founding principal of Building Science Corporation and an ASHRAE Fellow. He is a building scientist who investigates building failures. Lstiburek received an undergraduate degree in Mechanical Engineering from the University of Toronto, a master's degree in Civil Engineering from the University of Toronto and a doctorate in Building Science Engineering from the University of Toronto. He has been a licensed Professional Engineer since 1982 and is internationally recognized and his work has influenced building codes and standards in every climate zone.

He is a recipient of the Carl Cash Award from ASTM, a "Becky" from the Ontario Building Envelope Committee (OBEC) and the EEBA Legacy Award all for lifetime contributions to building science. He has also been inducted into the Building Performance Industry Hall of Fame and has received the NESEA Professional Leadership Award for "changing the way we think about building science and how we perform our work".



GEMCO
ROOFING & BUILDING SUPPLY
Family Owned & Operated Since 1977

Residential Products & Accessories

- Shingles
- Skylights
 - Cedar Shakes
 - Slate Tile
 - Synthetic Tile

Commercial Products & Accessories

- EPDM
 - Modified
 - PVC
 - TPO
 - Roof Coatings
 - Waterproofing

Gemco has remained a family run business since 1977. Equipped with a knowledgeable staff, we continue to provide superior customer service for all of your roofing needs.

- Knowledgeable Staff
- Convenient Location
- Same Day & Emergency Deliveries
- Roof Top Deliveries

2601 Van Buren St
Bellwood, IL 60104
(708)544-1444
www.GemcoRoofingSupply.com



CAPTIVERESOURCES

WE HELP COMPANIES TAKE THEIR RISK CONTROL FROM GOOD TO GREAT

As the premier consultant to group captive insurance companies, Captive Resources empowers companies to take control of their insurance programs, develop safer workplaces, and lower their total cost of risk.

35+
YEARS

of Excellence in
Group Captives

5,700
MEMBERS

Across 43
group captives

\$3.5
BILLION

Combined annual
premium

CONTACT US TO LEARN MORE

John Rozwat — VP, Captive Executive



847.230.8425



jrozwat@captiveresources.com



www.captiveresources.com

MULTILINGUAL SAFETY TRAINING

English - Spanish - Polish - Arabic



LWSC.ORG

LATINO WORKER SAFETY CENTER

888-595-5972

- Fall Protection Safety Training
- OSHA 10
- Chicago Scaffold Card
- First Aid CPR-AED
- And more!

In person at your location or ours!

**For more information, please visit
LWSC.ORG**

This material was produced under grant number Susan Harwood Grant # SH-05069-SH8 from the Occupational Safety and Health Administration, U.S. Department of Labor. It does not necessarily reflect the views or policies of the U.S. Department of Labor, nor does mention of trade names, commercial products, or organizations imply endorsement by the U.S. Government.

Delay Claims, Part 2: Types of Damages and How to Calculate Them

By Trent Cotney



Trent Cotney

When you experience a project delay, you likely are worried about the schedule and budget—and rightly so. Delays can wreak havoc on a project, and they can affect your bottom line. Once you have determined the delay type (excusable or not and compensable or not), you and

the other parties involved can look at damages. Courts will review the case from several angles.

Proving Delay Damages

Damage awards are serious. They impact owners and contractors, so they should not be based on guesses or speculation. If your case goes to court, judges will access the time and total costs involved. To be successful, you will need detailed records regarding the delay and its impact. You will probably also require expert testimony to prove your eligibility for damages.

Types of Delay Damages

When you experience a delay, you may face many types of damages. So it is essential that you track your lost productivity and the costs you are incurring.

- **Labor Costs:** Nearly every delay results in higher labor costs. You may have to work under revised conditions or out of sequence. You may also face labor shortages if the delay stretches on. In addition, scheduling subcontractors could become problematic, leading to more delays. Extended or additional labor costs affect nearly every party connected to the project delay. But be careful not to think that all additional labor costs are caused by the delay. The damages can address only those definitively impacted by the delay.
- **Loss of Efficiency and Productivity:** If a delay affects your productivity or efficiency, you may be able to recover damages. However, you will need to prove those losses. You must show the elements of causation

and liability and/or demonstrate that the delays caused times of disruptions and inefficiencies.

- **Material and Equipment Costs:** When delays occur, you may lose the chance to use equipment you have rented, or you may be unable to rent equipment to others. These losses are compensable as long as they can be proved.
- **Direct and Indirect Overhead:** During a delay, you may find it impossible to obtain other contracts. Those other contracts could absorb some of your ongoing overhead costs. So if you can prove the loss of new contracts, you may be able to recover damages of unabsorbed overhead.

Methods for Calculating Damages

There are several approaches for calculating delay damages.

- **Measured Mile Analysis:** This method compares actual labor costs or labor productivity during different time periods: 1) when the work was not affected by the delay and 2) when the work was affected by the delay. This analysis can pinpoint lost productivity and isolate it from other factors beyond the delay period. This damage calculation method is preferred and considered the most reliable.
- **Total Cost Method:** This method uses basic math. The contractor's bid estimate is subtracted from the total costs incurred during a project. The difference between those two numbers represents a cost caused by the delay and can be attributed to the defendant's breach. This method is usually applied under extraordinary circumstances.
- **Modified Total Cost Method:** This method is usually allowed only when other means of proving damages are considered impossible. If, as a contractor, you are using this method, you will need to show that your estimate was reasonable, the total costs are reasonable, and you were not responsible for the additional costs, but it is impractical for you to accurately determine the nature of the specific losses. After analyzing the situation, the court may subtract

your bid from the total project cost but then make adjustments due to bid miscalculations, any part you played in the delay, and/or your inability to identify the nature of the losses.

Final Thoughts

For every project you successfully bid, be sure to read your contracts carefully and understand the conditions. Track all your expenses related to labor, equipment, and materials, and document how any delays impact those expenses. With increased material lead times causing delays on almost every project, a roofing contractor should seek time extensions for even minor delays caused by weather or other causes outside the contractor's control.

You will probably experience delays more often than you would like, but it is essential that you are prepared for them. If you face delay-related problems, make sure you assess your situation, identify your losses, and help determine the best strategies for seeking damages.

The information contained in this article is for general educational information

only. This information does not constitute legal advice, is not intended to constitute legal advice, nor should it be relied upon as legal advice for your specific factual pattern or situation. 

Editor's Note: To read the first article in this series, Visit <https://crca.org/Resources/CRCA-Today-Magazine>

Trent Cotney is a partner and Construction Practice Group Leader at the law firm of Adams and Reese LLP and CRCA General Counsel. For more information on this subject, please contact the author at trent.cotney@arlaw.com.

M.W. Powell Company

Celebrating 175 Years of Serving Chicago
1847-2022



Moses W. Powell



CRCA Charter Member - NRCA Charter Member - MRCA Member - HACIA Member - MBE Certified

Low Slope Roofing
High-Rise Work

Vegetative Roof Systems
Architectural Sheet Metal

Honoring our past, celebrating the future

P: 773-247-7438 ~ 3445 S. Lawndale Ave., Chicago, IL 60623 ~ IL Lic # 104.000206

Your Chicagoland Roofing Equipment Supplier



National Boom Trucks



Articulating Cranes



Manitex Boom Trucks (& More!)

SALES / RENTALS / RPO's / SERVICE / PARTS

Crane Certifications / PM Services / Equipment Rebuilds / Painting & Restoration / OEM Parts / On-site Field Service / Shop Service / 3rd Party Inspections



800-922-5508
wppecrane.com





39TH ANNUAL TRADE SHOW & SEMINARS

"ROOFING WEEK IN CHICAGO" - JANUARY 18-20, 2023

2023 Event Sponsors



ADAMS AND REESE LLP.



As the 2022-2023 Chicago Roofing Contractors Association President, I invite you to attend and participate in the CRCA Welcome Reception, Trade Show and Seminars at Drury Lane Conference Center.

The goal of this annual event is to offer educational resources for contractors, consultants, specifiers, code officials and others to develop top level practices which will ultimately provide building owners and managers the best roofing, waterproofing, insulation and air barrier installations that can be found.

Don't miss over 6 hours of Continuing Education Credits - AIA, ICC, ALA, IIBEC - during the educational sessions and the Exhibit Hall is free!

- Roofing Industry Round Tables - sponsored by CRCA's Emerging Leaders and Chicago Women in Roofing Committees
- Roofing Week Kickoff Reception
- Roofing Industry Breakfast and Keynote Speaker Brian Brurud (Free for Specifiers, Roof Consultants, fee for others)
- Low Slope Legal Update - Trent Cotney
- Steep Slope Technical Update - Mark Graham
- Growing a Profitable Service Department - Tracey Donels
- Material Handling - Danger On the Roof - Frank Marino & Kurt Kollwelter
- Rooftop Failures & How to Prevent - Matt Dupuis and Leanne Prybylski
- Steep Slope Shingle Panel - Atlas, CertainTeed and GAF
- Roofing Industry Update with NRCA's Mark Graham

Don't miss 135 Exhibits & Relationship Building!

Thursday, January 19, 11 am - 5 pm ~ Friday, January 20, 9 am - 1 pm

CRCA's Trade Show & Seminars continue to build its national reputation for cutting edge programming through the hard work of CRCA's Trade Show Committee Members: Ryan Petrick, Greg Dedic, Matt Adler, Dave Good, Kim Good, Mark Duffy, Jason Peterson & Ross Ridder.

On behalf of CRCA's Trade Show Committee and our Board of Directors, CRCA thanks our dedicated Exhibitors and Sponsors. Because of your time, efforts, and dedication, our annual CRCA Trade Show & Seminars continues to be a monumental success!

As CRCA President, I invite you to be active in our industry by joining CRCA as a member and volunteering for a CRCA committee. I look forward to seeing you in January.

*Mitch Rabin, A-1 Roofing Co.,
2022-2023 CRCA President
Register online at www.CRCA.org*



Drury Lane Conference Center - 100 Drury Lane, Oakbrook Terrace, Illinois, January 18-20, 2023

2023 EXHIBITOR LISTING

838 Coatings	12	Flex Membrane international Corp.	610	Performance Roof Systems, Inc.	801
A.C.T. Metal Deck Supply	702	FT Synthetics Inc	308	Polyglass USA Inc.	201, 203
Aadvanced Building Products/Carlisle	5	Gaco	403	Pro Fastening Systems, Inc.	40, 41
ABC Supply Company	210, 212	GAF	10, 35	Progressive Materials	39
AccuLynx	206	GARLOCK CHICAGO	411, 413	R.M. Lucas Co.	112, 114
Air Vent	108	Garza Roofing Equipment and Supply	508	Raptor Synthetic Underlayment	608
Alco Products	512	GCP	106	Richards Building Supply Co	514
Aletheia Digital	501	Gemco Roofing & Building Supply	38	Roofers & Waterproofers Local 11	815
American Roofing Supply	710, 712	Geocel div of Sherwin-Williams	31	RUNNION EQUIPMENT COMPANY	809, 810
Architectural Building Solutions, Inc.	18, 19, 20	Georgia Pacific DensDeck	401	Safety Check, Inc.	503
ATAS International, Inc.	17	Giuffre Midwest LLC	305	Sentry Building Innovations	509
Atlas Roofing Corporation	101, 103, 105	Gulfeagle Supply	606	Service First Solutions	36
Barge Terminal Trucking, Inc.	11	H.B. Fuller	29, 30	Sheet Metal Supply LTD	44
Beacon Building Products	406, 408 410 412	HAPCO Inc.	45	Sika Sarnafil	107, 109
BEC Test - div. Bldg. Env. Consult.	513	Hart & Cooley	214	SIMIX LLC	817, 818
Berridge Manufacturing Company	718	Henry/Carlisle	46	Siplast	816
Big Rock Supply	705, 707, 709, 711	Hines Supply	111	SJ Mallein & Associates	402, 404
Bitec Inc	811	Houseworks Daylighting Solutions LLC	204	SOPREMA - USA	803
Bitumar USA Inc	207	Hunter Panels	306	Southwind RAS LLC	208
Blue Ridge Fiberboard, Inc.	309	ICP Building Solutions Group	704	Tarco	612
Bone Roofing Supply, Inc.	6,7	IKO - Commercial	314	TRUFAST	43
Castle Metal Products	213	IKO - Residential	510	TuffWrap	8
Cedar Shake & Shingle Bureau	701	Inland Coatings	613	Unified Steel	409
CERTAINTED	414	Industrial Cork Co	713	United Asphalt Company	205
Chem Link, Inc.	802	Insulfoam	304	USG Securock Roof Boards	21
Chicago Metal Supply & Fabrication Inc	506, 605	International Leak Detection	202	Vac-It-All Services, Incorporated	4
Chicagoland Roofers JATC	814	IR Analyzers Inc.	27,28	VB SYNTHETICS	511
Chris Industries, Inc.	313	JJ SUPERIOR METAL INC	15	Velocity Roof Vac Service Inc	507
Comprehensive Roofing Solutions Inc.	807, 808	Jobba Trade Technologies	505	VELUX Skylights	405
CRS: MFM Building Products	806	KARNAK CORPORATION	714, 716	Verde Solutions LLC	42
Continental Materials, Inc.	211	Kemper System America	13	Versico Roofing Systems	32
Cordeck	805	Lakefront Roofing & Siding Supply	1, 2	VFC	607
CRCA Refreshment Station 1	614	Latino Worker Safety Center	307	Viking Products Group	303
Dataforma Inc.	37	Leister Technologies	14	Walter Payton Power Equipment	700
DaVinci Roofscapes	407	LiveRoof	609	WickRight Inc/365 Construction Tents	302
Disposal Alternatives	33	Lomanco	310	Worthouse, Inc	24
Duro-Last Roofing	703	LRS	113		
EagleView	301	Makita Power Tools	611	LOBBY BOOTHS	
EcoStar LLC	804	Malarkey Roofing Products	25, 26	ASA Chicago	L1
Estimating Edge	312	Marathon Roofing Products	812	CSI	L2
Everest Systems, LLC	16	Mld-States Asphalt	311	MRCA	L3
FAKRO America, LLC	3	Mule-Hide Products	209	NRCA	L4
FiberTite Roof Systems	110	Novagard	9		
FlashCo	34	OMG Roofing Products	22, 23		
		Omni Ecosystems	708		
		PAC-CLAD Petersen	102, 104		

Exhibit Hours:
Thursday, January 19, 11 am to 5 pm
Friday, January 20, 9 am to 1 pm
Register at: [CRCA.ORG / Events](https://www.crca.org/events)



TRADESHOW & SEMINARS

Lobby Booths:
ASA Chicago
CSI Chicago
MRCA
NRCA

Exhibit Hours:
Thursday, 11 am - 5 pm
Friday, 9 am - 1 pm

Exhibit Floor Plan - Drury Lane Conference Center January 18-20, 2023

Ladies Restroom

Mens Restroom

Trade Show Floor Entrance

Entrance to Drury Ln. Theater
*Safety Seminar

Registration

Lakefront Roofing & Siding Supply

1

2

3

4

5

6

7

8

9

10

11

12

13

14

15

16

17

18

19

20

21

22

23

24

25

26

27

28

29

30

31

32

33

34

35

36

37

38

39

40

41

42

43

44

45

46

47

48

49

50

51

52

53

54

55

56

57

58

59

60

61

62

63

64

65

66

67

68

69

70

71

72

73

74

75

76

77

78

79

80

81

82

83

84

85

86

87

88

89

90

91

92

93

94

95

96

97

98

99

100

101

102

103

104

105

106

107

108

109

110

111

112

113

114

115

116

117

118

119

120

121

122

123

124

125

126

127

128

129

130

131

132

133

134

135

136

137

138

139

140

141

142

143

144

145

146

147

148

149

150

151

152

153

154

155

156

157

158

159

160

161

162

163

164

165

166

167

168

169

170

171

172

173

174

175

176

177

178

179

180

181

182

183

184

185

186

187

188

189

190

191

192

193

194

195

196

197

198

199

200

201

202

203

204

205

206

207

208

209

210

211

212

213

214

215

216

217

218

219

220

221

222

223

224

225

226

227

228

229

230

231

232

233

234

235

236

237

238

239

240

241

242

243

244

245

246

247

248

249

250

251

252

253

254

255

256

257

258

259

260

261

262

263

264

265

266

267

268

269

270

271

272

273

274

275

276

277

278

279

280

281

282

283

284

285

286

287

288

289

290

291

292

293

294

295

296

297

298

299

300

301

302

303

304

305

306

307

308

309

310

311

312

313

314

315

316

317

318

319

320

321

322

323

324

325

326

327

328

329

330

331

332

333

Can a Contract Be Enforced Without a Countersignature?

By Trent Cotney



Trent Cotney

Whenever you enter an agreement with another party, you probably think that your signature on that contract is crucial. After all, it is required, right? Interestingly, a recent ruling from the U.S. District Court for the Southern District of Illinois enforced a partially executed agreement

even though one party failed to countersign it. The court determined that assent was demonstrated based on the party's acts and conduct.

What the Case Involved

In *United States ex rel. Spirtas Worldwide, LLC v. SGLC Consulting LLC*, contractor SGLC Consulting LLC was working with subcontractor Spirtas Worldwide LLC in Marion, Illinois, on a U.S. Fish and Wildlife Service project. Spirtas filed a Miller Act claim against SGLC to recover labor and materials costs. However, SGLC pointed to their trade partners agreement (TPA), which included the consent to arbitrate. Based on that, SGLC filed a motion to dismiss the claim or at least stay the proceedings.

In response, Spirtas argued that the TPA was invalid because SGLC never countersigned it. In addition, the subcontractor asserted that the TPA should not be enforced because the agreement had been inconsistent regarding the arbitration venue selection. The arbitration clause called for the process to occur in Edwards, Colorado, but the separate venue selection clause called for its taking place in the state where the project was located. Spirtas stated there had been no "meeting of the minds" in the contract formation.

What the Court Decided

The U.S. district court first reviewed whether the dispute belonged in arbitration instead of in court. There is definitely precedent that an arbitrator must decide a

contract governed by the Federal Arbitration Act (FAA), and that contract is both valid and enforceable. But whether the contract has been acceptably formed should be decided by a court.

The court considered whether SGLC's signature was required for the TPA to be valid. According to Illinois law, a party can demonstrate contractual assent through its acts and conduct, and it can be bound by its provisions, whether it has signed the contract or not.

After Spirtas signed the TPA, SGLC had repeated engagement with Spirtas. This behavior supported SGLC's assent to the TPA. This engagement included meeting about pre-bid actions, discussing demolition plans, and participating in site visits. SGLC also asked Spirtas to prepare documents that were incorporated into the prime contract, and it presented Spirtas to the government as its subcontractor. The court determined that these actions indicated assent to the TPA.

Spirtas indicated assent to the TPA because it signed the TPA. The court ruled that Spirtas could not question the TPA's validity since it had clearly agreed to it.


In addition, the court was not swayed by the inconsistent venue provisions argument that Spirtas presented. The court ruled that Spirtas did not adequately demonstrate how the inconsistencies made the TPA unenforceable.

Ultimately, the court determined that the TPA was both valid and enforceable. Therefore, both parties were obligated to follow the agreement to use arbitration. The court dismissed the claim. It did not issue a stay because, per the FAA, it was not allowed mandate arbitration outside its own district, and the TPA stated the arbitration location as Edwards, Colorado.

Advice for Contractors

You have undoubtedly heard how important it is to read and understand every contract you sign, but this case illustrated another critical detail. When parties enter an agreement, conduct and acts may be just as binding as a signature. Therefore, it is essential that you know your

state's laws and comprehend how your actions—and the actions of the other party—can make a contract valid and enforceable.

The information contained in this article is for general educational information only. This information does not constitute legal advice, is not intended to constitute legal advice, nor should it be relied upon as legal advice for your specific factual pattern or situation. 

Trent Cotney is a partner and Construction Practice Group Leader at the law firm of Adams and Reese LLP and CRCA General Counsel. For more information on this subject, please contact the author at trent.cotney@arlaw.com.



Manage Your Business On The Go With *myABCsupply*

- ✓ Order Online
- ✓ Measurement Services
- ✓ Find A Location Near You
- ✓ Track Orders & Deliveries
- ✓ Simplify Billing

Ask us about our new Express Pickup service

18 Locations in the Chicago area to serve you

Addison • Alsip • Aurora • Cicero • Crystal Lake • Elgin
Gurnee • Joliet • Manteno • Merrillville • Mokena
Mundelein • Naperville • Niles • Valparaiso • Wauconda
West Chicago • Wheeling



CRCA Welcomes the Following Member Sponsors!

Beacon Building Products
GAF Materials Corporation

**Platinum
Sponsors**

**Gold
Sponsors**

CertainTeed Roofing Products
USI Insurance Services

**Silver
Sponsor**

Brown & Brown Inc.
NSS Exteriors

Captive Resources

**Bronze
Sponsor**

Visit CRCA.org / CRCA Sponsors to learn more.

PROUDLY REPRESENTING
THE **ROOFING** >>
INDUSTRY



ADAMS AND REESE LLP

®

ADAMSANDREESE.COM //

TRENT.COTNEY@ARLAW.COM //

866.303.5868

Industry News

By CRCA Staff

Siegel Speaks to CRCA Membership

At the November 8, 2022, CRCA Membership Luncheon and Meeting, Philip Siegel, Hendrick, Phillips, Salzman & Siegel, P.C. spoke to members on Employment Practices Liability. He covered when this type of insurance is needed, common claims not covered, EPLI coverage and other key information. Visit CRCA.org to download the presentation in the Members Only portal. Not a member yet? Contact info@crca.org to learn more.

CRCA Leaders in Springfield

CRCA Lobbyist and Consultant Margaret Vaughn organized a successful "Sea Cruise Night" reception for Illinois Legislators and their staff in late November. CRCA leaders Matt Adler, Kevin Filotto, Dan Henshaw, Mark Moran, Mitch Rabin, Rod Petrick, Tony Roque and Bill McHugh met with legislators to talk about upcoming energy code changes, and the Illinois Roofing Licensing requirements. Looking forward to CRCA's next reception in '23.



CRCA Photo

CRCA Members Recognized at Annual Award Dinner

On December 3, 2022, CRCA's board and members celebrated the accomplishments of 2022 and recognized the following for professionalism, outstanding leadership, and efforts to raise the bar in the roofing industry. 2022 CRCA Award Recipients include:

Clyde Scott Award:



CRCA Photo:
Tony Roque, M. W.
Powell Company

Award of Excellence:



CRCA Photo:
Art Scheidecker,
Architectural Building
Solutions, Inc.

CRC / Local 11 Gold Medal Safety Award:



CRCA Photo:
George Patterson
(Bennett & Brosseau)

Associate of the Year:



CRCA Photo:
Randy and Kevin Gleason
(Gemco)

CRCA Announces 2023 Board of Directors:

Officers:

- President: Mitch Rabin, A-1 Roofing Co.
- 1st VP: Mark Moran, Knickerbocker Roofing & Paving Co, Inc.
- 2nd VP: Kevin Froeter, Sterling Commercial Roofing
- Treasurer: Casey Fraher, Crowther Roofing
- Secretary: Dan Henshaw: Riddiford Roofing
- Past President: Mark Duffy, Elens & Maichin Roofing & Sheet Metal, Inc.

Directors:

- Matt Adler, Adler Roofing & Sheet Metal, Inc.
- Dominic Dunlap, DCG Roofing
- Kevin Filotto, Filotto Roofing
- Larry Marshall III, L. Marshall Roofing
- Bill O'Brien, Jr., Combined Roofing Services LLC.
- Ryan Petrick, Ridgeworth Roofing Co., Inc.
- Bob Prette, Tidwell Roofing & Sheet Metal
- Shawn Sullivan, Olsson Roofing Company, Inc.
- Mike Zimmerman, Reliable Roofing

Associate Directors:

- Dave Good, Bone Roofing Supply
- Mike Lowery, A&D Products
- Ski Wysocki, Chicago Metal Supply & Fabrications

CRCA extends a great "thank you" to Jim Prusak, Prusak Construction & Roofing, Inc. for his service as director and office from 2015-2022 and Joan Crowe, GAF for her service as Associate Director from 2020-2022.



CRCA Photo: Jim Prusak, Mitch Rabin, and Joan Crowe

CRCA Announces New Education Series Format in 2023

Mitch Rabin, CRCA President announced the new 2023 programming format for CRCA Membership Meetings and events. With a "Topic Focus" vs a "Committee Focus", Rabin feels the new format will clearly define the programming to attendees and entice a larger audience to CRCA's events. Watch CRCA.org for the March 21, 2023, event details.

CRCA Foundation Scholarships Now Available



Annually, the CRCA Foundation awards over \$25,000 in new scholarship awards, available to graduating high school seniors attending junior colleges or 4-year universities. These are based on academic performance, extracurricular activities, employment, and personal recommendations. To learn more, visit CRCA.org / Foundation and download the application.

CRCA Manufacturer Technical Resources Available—Are We Missing Yours?

Visit CRCA's new Technical Resource Portal where there are over 100 technical videos and resources from over thirty CRCA manufacturer and distributor members. Forward these valuable links to your crews or others for easily accessible technical information even when up on the roof.

Calling all CRCA Manufacturer members! Are we *missing* your technical information? Contact info@crca.org to be included.

Carlisle Syntec Systems Steps Up on Recycling



Carlisle SynTec Systems is pleased to announce it is collaborating with EnvironFocus™ to help reduce landfill waste generated by the commercial roofing industry. EnvironFocus™ is a sustainability services firm that helps clients improve their brand reputation and reduce their business risk in the communities they serve, providing increased market share and revenue while protecting the environment.

Carlisle's collaboration with EnvironFocus™ will help reduce the number of canisters, drums, and buckets that end up in landfills by providing contractors with a quick and easy container recycling option. This program will help Carlisle's customers save money while improving the long-term health of the planet by reducing landfill waste. EnvironFocus™ provides this recycling program "free-of-charge", with the only cost incurred by contractors being the shipping fee. Visit carlisesyntec.com and visit the Resources / Sustainability / Solutions to learn more.

CRCA Members Give Back



Olsson Roofing Photo

In November, Olsson Roofing's staff joined together to support the National Breast Foundation and to raise awareness of this terrible disease. The CDC estimates that over 265,000 cases of breast cancer are diagnosed in women annually in the U.S. as well as 2,400 in men. 42,000 deaths result annually as well.

Olsson employees wore pink shirts on Fridays and participated in other group activities and also made a group donation to the National Breast Cancer Foundation. Way to go Olsson!

(Editor's Note: If your company participates in other philanthropic events during the year, please send the information to CRCA.org.)

FlashCo Adds New Sales Rep

CRCA Member FlashCo announced in October the addition of Carl McCall to the Central Region—North. McCall brings over five years of roofing and waterproofing industry experience. According to Rick Santolaya, FlashCo National Sales Manager, "Carl understands the process from top to bottom and we're excited to have him continue to build our central territory" which includes IA, KS, IL, MO, MN, and WI.

Industry Acquisitions



Holcim Has Completed the Acquisition of the Polymers Sealants North America

(PSNA) division of Illinois Tool Works. PSNA is a leader in coating, adhesive and sealant solutions with 2022 estimated net sales of USD 100 million. With more than 150 employees and manufacturing plants in California, Arizona, Texas, Georgia, and Massachusetts, PSNA will accelerate the growth of Solutions & Products, especially in waterproofing and coatings. PSNA's innovation-driven approach is highly complementary to Holcim's existing building envelope business and is expected to generate significant synergies.

Jamie Gentoso, Head Solutions & Products: "With PSNA we are broadening our waterproofing and coatings offering while delivering significant synergies with our roofing business." He continued with "By expanding our building envelope offering, together we can play a bigger role in providing innovative and sustainable solutions for energy-efficient buildings."



Saint-Gobain Acquires GCP Applied Technologies

On September 27, 2022, Saint-Gobain received the approvals for its acquisition of GCP Applied Technologies Inc., a major construction chemical manufacturer. The specialty building materials business will be integrated into the CertainTeed business serving local customers in its Region. All other businesses, consisting mainly of concrete admixture and cement additives will be combined with the Chryso business and be part of the High Performance Solutions segment.

CSI Merges Chapters

CSI Northern Illinois and CSI Chicago Chapters announced a merger in September, creating the largest and most active CSI chapter in the country. CSI commented that the merger will facilitate more networking opportunities and expand access to programs and events.

To learn more, visit csiresources.org or stop by CSI's booth at the January 18-20, 2023, CRCA Trade Show and Seminars!

CRCA Code Corner

CRCA & 2021 IL Energy Conservation Code—

CRCA Participated in the adoption process for the 2021 International Energy Conservation Code Process—at the State of Illinois. Amendments that were in the 2018 version of the code, are still valid until the 2021 version is adopted through the Illinois legislative process.

CRCA & IL “STRETCH” Energy Conservation Code—

The State of Illinois Energy Code adoption process is managed by the Illinois Capital Development Board (CDB). The CDB has advised us that a new “Stretch” Energy Code is being developed, based on direction from the Climate and Equitable Jobs Act (CEJA), now known as the IL Energy Efficiency Act. An Energy “Stretch” Code is a more aggressive code than the “Base Code”. A stretch code becomes mandatory, only if adopted by municipalities in Illinois.

CDB hired two out-of-state organizations, The Rocky Mountain Institute (RMI-Colorado) and New Buildings Institute (NBI-Oregon), to be technical experts helping the Illinois Energy Code Advisory Council develop a new IL “Stretch” Energy Code. CDB stated they did not have the technical ability to manage the “Stretch” Energy Code development process.

RMI and NBI representatives, working with CDB, have been presenting proposals from the not-yet-approved DRAFT 2024 International Energy Conservation Code—for the basis of the “Stretch Code”. We’re a bit curious why a DRAFT would be used as a basis when it has not been fully vetted, and why an out of state firm is leading the process. Was there no talent in Illinois that could provide services free of charge for this “Stretch” code development process?

Others participating in the process, including CRCA, have stated that the state use the already published 2021 International Energy Conservation Code (IECC) as the starting point, then amend it to “Stretch”. This way, code officials and industry only learn one code at a time. Plus, the 2024 IECC has not yet been published. We really don’t know the content of that code yet, as it is not finished.

CRCA’s George Patterson was appointed by the IL CDB, as a member of the Illinois Commercial Energy Code Advisory Council that approved amendments to the 2018 IL amended IECC now in use, and the 2021 IL amended IECC. This group is now developing this “Stretch” Energy Code. Patterson brings a field construction project focused perspective to the council. With several meetings to go for both commercial and residential codes, a final draft of the

“Stretch” Code is to be published and ready to adopt by December 21, 2023.

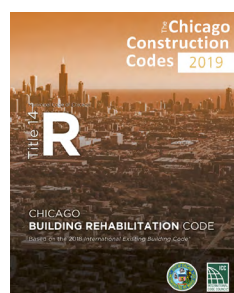
Chicago Codes - Did you Know?—Did you know that CRCA’s Industry Affairs Committee collaborated with the City of Chicago and the State of Illinois on the concept of technical infeasibility for roofing work?

When reroofing, there are some that believe that the roof insulation needs to be upgraded to new construction thicknesses, regardless of obstacles.

Significant costs arise when existing building limitations such as low wall edges, doors at the rooftop, HVAC equipment and other curbs are too low. Also, new thicker wood blocking at perimeter edges means much work and wood—to accommodate new construction insulation thicknesses.

Section 306 in the 2019 *Chicago Building Rehabilitation Code* (CBRC) allows less than new construction insulation thicknesses when a technical infeasibility situation arises in reroofing at existing buildings. The City does not require special permission for this, as it is in their existing building code.

Roofing contractors often replace existing low efficiency insulation with equal or better efficiency insulation with today’s higher R-Values during the reroofing process. This way, the building insulation value is NOT reduced, but might even be better performing, saving energy—and providing value to the building owner and manager.



CRCA’s Industry Affairs Committee collaborated with the City of Chicago, on CBRC Section 306.1 for Chicago’s existing buildings.

Want to learn more about codes in Illinois, Chicago and Beyond? Don’t miss [CRCA’s Trade Show & Seminars](#), Jan. 19 & 20, 2022

Drury Lane Conference Center, Oakbrook Terrace.
Register at CRCA.org / Events / Trade Show.


Chicago Energy Transformation Code—The 2022 Chicago Energy Transformation Code, based on the 2021 edition of the International Energy Conservation Code, applies to projects where the first permit application is started on or after November 1, 2022. Additional requirements of this code will apply to projects where the first permit application is started on or after January 1, 2023.

The 2019 Chicago Energy Conservation Code, based on the 2018 edition of the International Energy Conservation

Code, applies to permit applications started between June 1, 2019, and October 31, 2022, as well as subsequent phases of projects where the first phase permit is subject to this code.

The City of Chicago is working with the International Code Council to publish a compiled version of the 2022 Chicago Energy Code, which will be available in the near future in print and digital formats. Until that is available, please reference the local amendments.

When it comes to reroofing, refer to section 306 of the Chicago Building Rehabilitation Code.

CRCA Statewide Work—As you can see, CRCA is involved statewide in issues such as Building and Energy Codes, Existing Building Codes, Roofing Contractor Licensing, and others, that affect roofing contractors and building owners in the State of Illinois. While our association includes “Chicago” in our name, our reach is much more. Thanks to CRCA’s downstate members for your support. If your company is located outside the Chicagoland area and is not a member, visit CRCA.org today to join. 



**HENDRICK PHILLIPS
SALZMAN & SIEGEL^{PC}**
ATTORNEYS AT LAW
TRUSTED PARTNERS IN CONSTRUCTION LAW SINCE 1981



**PROUD MEMBERS SERVING
CHICAGO ROOFING CONTRACTORS ASSOCIATION**

(404) 522-1410 | WWW.HPSSLAW.COM

230 PEACHTREE STREET NW | SUITE 2500 | ATLANTA, GA 30303



CORCO
INDUSTRIAL CORK
C O M P A N Y
SINCE 1935

FULL PRODUCT LINE DISTRIBUTOR
FIRESTONE | FIBERTITE | GAF | SARNAFIL | SOPREMA
EXPANDED & EXTRUDED POLYSTYRENE
PAVER & PEDESTAL SYSTEMS
GEOFOAM

ROOFTOP DELIVERY & JOBSITE ASSISTANCE

848 LARCH AVE, ELMHURST IL | 630. 832.2803 | CORCO.ORG



CRCA Contractor Members

The Contractor Members of the Chicago Roofing Contractor Association install all types of roofs, including reflective single ply, modified bitumen, built up, gravel, reflective coatings, shingle, shake, slate and tile, vegetative garden or photovoltaic coverings. From formation following the Great Chicago Fire of 1871, CRCA Members have moved with the times and technology, yet continue to maintain some of the same goals set forth over 140 years ago. To find a CRCA Professional Contractor, visit www.CRCA.org.

1st Home Improvement.....	(847) 496-5530
A&E Roofing & Siding.....	(630) 264-1553
A+ Roofing Co., Inc.....	(630) 227-1111
A-1 Roofing Co.....	(847) 952-3600
Active Roofing Co., Inc.....	(773) 238-0338
Adams Roofing Professionals, Inc.....	(847) 364-7663
Adler Roofing and Sheet Metal, Inc.....	(815) 773-1200
Advanced Roofing & Woodworking Inc.....	(630) 231-7663
Aegis Construction Group, Inc.....	(630) 709-8121
Air Pressure Damp Proofing.....	(847) 394-4100
All American Exterior Solutions.....	(847) 438-4131
All in 1 Roofs.....	(630) 388-9060
All Sealants, Inc.....	(708) 720-0777
Allendorfer Roofing Co., Ltd.....	(773) 463-7808
Allied Waterproofing, Inc.....	(630) 654-9700
Anderson & Shah Roofing Inc.....	(815) 741-0909
Anthony Roofing Tecta America LLC.....	(630) 898-4444
Apex Exteriors, Inc.....	(847) 531-8960
Bennett & Brosseau Roofing, Inc.....	(630) 759-0009
BP Roofing Solutions, LLC.....	(815) 855-8326
Care Sheet Metal & Roofing, Inc.....	(708) 387-9784
Champion Roofing, Inc.....	(847) 673-7663
Clark Roofing Co.....	(708) 681-2200
Combined Roofing Services LLC.....	(630) 231-4422
Complete Building Maintenance Co.....	(630) 932-7890
Connelly Roofing, Inc.....	(630) 941-8598
Countryside Roofing, Siding & Windows, Inc.....	(847) 221-5600
CPR Roofing, Inc.....	(815) 399-6989
Crawford Roofing Experts, LLC.....	(708) 385-5555
Crowther Roofing & Sheet Metal & HVAC.....	(815) 726-2400
CSR Roofing Contractors, Inc.....	(708) 848-9119
Custom Roofing Contracting LTD.....	(847) 639-8400
DCG Roofing Solutions Inc.....	(847) 296-6611
Deady Roofing & Construction, Inc.....	(708) 672-0874
Deluxe Roofing Inc.....	(847) 404-9775
Distinctive Roofing, Inc.....	(815) 986-0831
Domain Corporation.....	(773) 628-0001
DRC Roofing.....	(630) 797-6795
Driscoll Renovations, Inc.....	(630) 628-7800
Dunne Roofing Company.....	(847) 696-1643
DuSable Construction Co.....	(773) 463-9290
E. Ariel Roofing Solutions LLC.....	(224) 357-8745

Elens & Maichin Roofing & Sheet Metal, Inc.....	(815) 727-2689
Elite Home Restoration, Inc.....	(630) 823-8580
F & G Roofing Company, LLC.....	(708) 597-5338
Feze Roofing, Inc.....	(630) 530-5944

Filotto Roofing, Inc.....	(815) 740-5461
Foremost Improvements Inc.....	(847) 376-8617
Four Elements Restoration.....	(866) 848-9337
Freeport Industrial Roofing.....	(815) 235-5350



Lifting Equipment for the Roofing Industry



New and Used Equipment for sale and rent

Rental Cranes available by the day, week, month, or longer

Knowledgeable Technicians factory trained to do the job right

Large Parts Inventory ready for delivery

NATIONAL CRANE



Call us or visit our new, state of the art facility!

800-824-6704 • 6201 East Avenue, Hodgkins, IL 60525

www.runnionequipment.com

CRCA Contractor Members

Galewood Tuckpointing &

Roofing Co., Inc. (708) 452-7900

GC Roofing LLC (773) 766-3421

Gluth Brothers Roofing Co. (219) 844-5536

Great Lakes Roofing (708) 862-1550

H.C. Anderson Roofing Company, Inc. (815) 624-4129

Henson Robinson Company (217) 544-8451

Huuso (630) 200-1419

J. P. Larsen, Inc. (708) 293-7662

Jerry & Sons Roofing & Remodeling, Inc. (708) 926-9150

Jones & Cleary Roofing /

Sheet Metal Co., Inc. (773) 288-6464 x23

KBC Exteriors LLC (708) 497-3737

Kerry Roofing & Masonry (708) 422-3004

Knickerbocker Roofing & Paving Co., Inc. (708) 339-7260

Korellis (708) 607-3200

Kreiling Roofing (309) 673-3649

L. Marshall Roofing & Sheet Metal, Inc. (847) 724-5400

Langlois Roofing, Inc. (815) 933-8040

LEAK STOP Roofing, Inc. (847) 719-2775

Licitra Roofing Inc. (708) 485-4848

Lindholm Roofing (773) 283-7675

Local Roofing Co., Inc. (847) 244-0500

M&T Exteriors Inc. (331) 240-2911

M. Cannon Roofing Company, LLC (847) 519-0698

M. W. Powell Company (773) 247-7438

Malcor Roofing of Illinois, Inc. (630) 896-6479

Matthews Roofing Company, Inc. (773) 276-4100

McDermaid Roofing &

Insulating Company (815) 963-8458

Metalmaster Roofmaster (815) 459-6415

MidAmerica Roofing, Inc. (630) 759-7500

Mortenson Roofing Co., Inc. (815) 464-7300

NIR Roof Care, Inc. (800) 221-ROOF

Nombach Roofing & Tuckpointing (708) 388-1090

Norton Sons' Roofing Company, Inc. (630) 257-8180

Olsson Roofing Company, Inc. (630) 892-0449

ONeill Contractors, Inc. (773) 774-2029

P & B Rebuilders (708) 456-1099

Peterson Roofing, Inc. (847) 590-5290

Pine Roofing Company (773) 539-9595

Pine Waterproofing & Sealants (847) 678-5700

Platinum Level Restoration (708) 632-4361

Prate Roofing & Installations LLC (847) 526-6402

Premier Construction, Inc. (630) 590-9305

Preservation Services, Inc. (815) 407-1950

Proliance General Contractors, Inc. (630) 541-3923

Pro-Tech Roofing, Inc. (847) 759-1970

Prusak Construction & Roofing, Inc. (708) 422-2624

R. B. Crowther Company (815) 942-6623

R. E. Burke Roofing Co., Inc. (847) 675-5010

Raincoat Roofing Systems, Inc. (708) 681-5757

Rako Roofing Inc. (773) 780-5482

Reliable Roofing (888) 279-7663

Relianz Restorations Co. (847) 447-3511

Renaissance Roofing, Inc. (815) 547-1725

Riddiford Roofing Company (847) 378-6024

Ridgeworth Roofing Co., Inc. (708) 598-0039

Roofing Systems, Inc. (815) 654-9540

Roofs, Inc. (708) 447-9300

Sager Sealant Corporation (708) 354-9300

Seal Tight Exteriors, Inc. (708) 755-3555

Showalter Roofing Service Inc. (630) 499-7700

SMART Roofing, Inc. (773) 992-5100

Solaris Roofing Solutions, Inc. (630) 639-5400

South Shore Roofing of Illinois, Inc. (708) 620-8130

Sta-Dry Roofing (770) 849-0079

STAR Roofing & Siding Co. Inc. (773) 588-6550

Sterling Commercial Roofing, Inc. (815) 626-7744

Stewart Roofing Company (773) 264-1754

Style Exteriors Inc. (847) 865-3069

Sullivan Roofing Inc. (847) 908-1000

Tecta America Illinois Roofing (630) 554-2200

Thunderbolt Construction Inc. (630) 584-7600

Tidwell Roofing & Sheet Metal (847) 437-2710

Tolberts Roofing &

Construction Services, Inc. (708) 389-7779

Tori Construction, LLC (708) 389-1530

Total Roofing & Construction (708) 201-7550

Total Systems Roofing Inc. (815) 455-7663

Trela Roofing & Remodeling (708) 422-7204

Union Roofing Co., Inc. (815) 945-2141

Van Doorn Roofing Inc. (847) 228-5800

W.B.R. Roofing Company, Inc. (847) 487-8787

Waukegan Roofing Company, Inc. (847) 623-1625

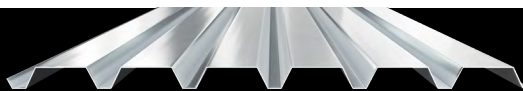
Weatherguard Roofing Co. (847) 888-3008

Windward Roofing & Construction Inc. (773) 638-6580

WW Construction & Roofing, Inc. (708) 250-3319

Zera Construction, Inc. (847) 966-8100

HIGH-QUALITY METAL DECK PRODUCTS



Cut To Length

Large Inventory

Guaranteed Quality

Competitive Prices

Excellent Customer Service

Same Day/Next Day Deliveries



Dex The Dexpert®

YOUR NATIONWIDE METAL DECK SUPPLY COMPANY

"WHATEVER IT TAKES"



877-857-6400

sales@cordeck.com | cordeck.com

CRCA Associate Members

The Associate Members of the Chicago Roofing Contractors Association are a vital part of the association and actively support the activities. Besides their generosity, they are represented on the CRCA Board of Directors, Co-Chair the Membership and Trade Show Committees and serve on the Health & Safety, Contracts & Insurance, Industry Affairs, Program and Scholarship Committees.

838 Coatings(763) 972-9441	Hickory Hills(708) 599-9770	Estimating Edge, LLC(561) 276-9100
A & D Products(630) 668-1551	Oak Forest(708) 802-6123	Everest Systems LLC(800) 575-8966
A.C.T. Metal Deck Supply(630) 978-7800	Wauconda(847) 416-3202	Exceptional Metals(888) 340-7169
AAAdvanced Building Products(317) 993-3200	Berridge Manufacturing Company(630) 231-7495	FAKRO America, LLC(630) 543-1010
ABC Supply Company, Inc.	Big Rock Supply(630) 350-2300	FiberTite Roof Systems(330) 262-1111
West Chicago(630) 293-1222	Bitec, Inc.(501) 354-8585	Firestone Building Products(800) 428-4442
Addison(630) 932-6653	Bitumar USA Inc.(410) 610-5953	Flameproof Companies(630) 859-0009
Alsip(708) 396-1414	Blue Ridge Fiberboard, Inc.(866) 850-8834	FlashCo.(866) 323-5274
Aurora(630) 844-1700	Bone Roofing Supply, Inc.(630) 628-8170	Flex Membrane International Corp.(610) 916-9500
Cicero(708) 222-8222	BPM Insurance(816) 695-1306	FT Synthetics Inc.(604) 594-3439
Elgin(847) 628-6048	Brown & Brown Inc.(630) 245-4600	Gaco Western(262) 951-0237
Gurnee(847) 360-8094	Capstone Materials Group LLC(847) 722-6652	GAF Materials Corporation(630) 241 5372
Manteno(815) 468-7041	Captive Resources(847) 879-2819	Garlock Chicago(630) 521-9645
Niles(847) 588-0935	Carlisle Construction Materials / WIP(630) 360-1306	Garth Building Products & Services Corp.(708) 564-5137
Wauconda(847) 487-7810	Carlisle SynTec(800) 479-6832	Garza Roofing Equipment and Supply(630) 229-4440
AccuLynx(608) 473-3800	Castle Metal Products(847) 806-4540	Gaylord Insurance Agency Corp.(708) 568-0754
Adams and Reese LLP(813) 227-5501	Cedar Shake & Shingle Bureau(604) 820-7700	GCP Applied Technologies(617) 498-4470
Adroit Marketing, Inc.(630) 885-5447	Certainteed Roofing Products(630) 383-6741	Gemco Roofing & Building Supply(708) 544-1444
ADVANCED Architectural Sheet	CHEM LINK Inc.(800) 826-1681, x204	Geocel / Kool Seal(800) 348-7615
Metal & Supply(231) 861-0050	Chicago Metal Supply & Fabrication(773) 227-6200	Georgia-Pacific Gypsum LLC(404) 652-2592
Air Vent Inc.(800) 247-8368	Chris Industries Inc.(847) 729-9292	Giuffre Midwest LLC(708) 656-9200
ALCO Products, LLC(313) 823-7500	CLEANWRAP Interior Protection Systems(888) 597-3334	Greenrise Technologies(615) 907-7460
Aletheia Digital(706) 685-6611	CNA Insurance Lombard/Chicago(630) 719-3000	Gulfeagle Supply(630) 773-0997
American Roofing Supply	Comprehensive Roofing Solutions Inc.(815) 498-9485	Gutter Supply(847) 283-0006
Naperville(630) 637-0750	ComStruct Sales, LLC(847) 922-3520	H.B. Fuller Company -
Elgin(847) 241-2000	Continental Materials, Inc.(973) 557-1884	Roofing Products Group(517) 841-7000
Joliet(815) 600-8886	Cordeck(262) 857-3000	Hapco Inc.(800) 345-9353
Loves Park(815) 877-6778	Crissie Insurance Group(800) 562-6362	Hart & Cooley Roof Product Systems -
Prairie State Exterior Products(708) 754-9339	Critical Point Corporation(800) 821-4104	Portals Plus, RPS & Milcor(800) 624-8642
Waukegan(847) 249-3328	D & P Construction Co., Inc.	Hendrick Phillips Salzman & Siegel, PC(404) 522-1410
Architectural Building Solutions, Inc.(630) 402-9988	Roll Off & Recycling(708) 338-3534	Henry Company(773) 412-9022
Arthur Williams Industries(800) 549-6004	Dataforma, Inc.(866) 764-9992	Hines Supply(847) 353-7700
Arvinyl Laminates, LP(800) 278-4695	DaVinci Roofscapes(913) 599-0766	HLP Systems, Inc.(847) 362-0777
Assurance Agency(847) 463-7118	DECRA Roofing Systems(800) 258-9740, x189	Houseworks Daylighting Solutions, LLC(847) 729-0255
Assured Partners Inc.(630) 355-2077	Detec Systems LLC(855) 753-3832	Hunter Panels(888) 746-1114
ATAS International, Inc.(610) 395-8445	Disposal Alternatives(617) 975-2000	IB Roof Systems(800) 426-1626
Atlas Roofing Corporation(800) 677-1476	D-MAC Industries(800) 878-3622	ICP Building Solutions Group(330) 753-4585
Barge Terminal Trucking, Inc.(630) 499-5565	DSP Insurance Services, Inc.(847) 934-6100	IKO(312) 244-9932
Beacon Building Products	Duro-Last Roofing, Inc. (Chicago)(800) 248-0280	Industrial Cork Company, Inc.(630) 832-2803
Carol Stream(630) 790-3400	Eagleview-Pictometry(866) 659-8439, x5561	Inland Coatings(515) 993-4524
Arlington Hts.(847) 357-0433	East Lake Metals LLC(219) 655-5526	INSULFOAM(402) 624-6611
Chicago / Pulaski(773) 772-6500	EcoStar LLC(800) 211-7170	Interior Protection Inc.(630) 530-4920
Des Plaines(847) 795-9378	ERSystems / ITW Polymers Sealants(847) 345-7094	International Leak Detection, LLC(866) 282-LEAK (5325)

CRCA Associate Members

IR Analyzers / Vector Mapping.....	(800) 879-1964
JJ Superior Metal, Inc.....	(708) 544-3757
Jobba Trade Technologies.....	(855) 633-3327
Johns Manville Roofing Systems.....	(224) 325-2524
Karnak Corporation.....	(732) 388-0300
Kemper System.....	(716) 558-2971
Kirby Fiberglass.....	(719) 547-3940
Lakefront Roofing Supply.....	(773) 509-0400
Latino Workers Safety Center.....	(708) 449-9500
Leister Technologies.....	(630) 760-1000
Lift Works, Inc.....	(630) 833-4626
Liftoff Crane Services LLC.....	(630) 800-6639
LiveRoof, LLC.....	(800) 875-1392
Lomanco, Inc.....	(800) 643-5596
LRS.....	(773) 681-8811
Lurvey Supply.....	(262) 479-8369
MACK Construction Services, LLC.....	(773) 525-3411
Makita.....	(536) 940-5489
Malarkey Roofing Products.....	(503) 283-1191
Marathon Roofing Products/ MRP Supports, LLC.....	(800) 828-8424
McElroy Metal, Inc.....	(219) 879-0252
MEP Insulation Recycling.....	(317) 894-2763
Mid-States Asphalt.....	(630) 730-1689
Mule-Hide Products Co., Inc.....	(815) 641-8548
Novagard Solutions.....	(800) 380-0138
NPC Colored Sealants.....	(708) 681-1040
NSS Exteriors.....	(708) 385-5815
OMG Roofing Products.....	(800) 633-3800
Omni Ecosystems.....	(312) 337-3196
Panasonic US.....	(201) 423-3154
Performance Roof Systems.....	(708) 380-5045
Petersen Aluminum Corporation.....	(800) 722-2523
Polyglass U.S.A, Inc.....	(847) 431-6005
Pro Fastening Systems Inc.....	(847) 577-7185
Pro Lightning Protection.....	(262) 925-7199
Progressive Materials.....	(630) 488-9277
Prosoco, Inc.....	(800) 255-4255
R.M. Lucas Company.....	(773) 523-4300
Raptor Synthetic Underlayments.....	(317) 202-8200
Ray's Roofing Supply.....	(219) 932-7297
RESISTO.....	(855) 227-7850
Richards Building Supply Company Corporate.....	(773) 586-7777
Calumet City.....	(708) 891-2211
Joliet.....	(815) 725-2458
Chicago/Belmont Ave.....	(773) 499-7177
Rockwool.....	(855) 876-3755
Roof Drain Parts and Supply LLC.....	(803) 496-0336

Roofmaster Products Company.....	(800) 421-6174
Runnion Equipment Company.....	(708) 447-3169
S.J. Mallein & Assoc.....	(630) 570-0301
Safety Check, Inc.....	(815) 475-9991
Safety Rail Company LLC.....	(888) 434-2720
Sashco, Inc.....	(800) 767-5656
Schwab Group LLC.....	(630) 326-9444
Sentry Building Innovations.....	(877) 254-0788
Service First Solutions.....	(469) 496-0055
ShapeConnect, Inc.....	(847) 322-4929
Sheet Metal Supply Ltd.....	(847) 478-8500
Sika Sarnafil.....	(800) 532-5123 x7222
Siplast.....	(800) 922-8800
Soprema, Inc.....	(330) 334-0066
Southwind RAS, LLC.....	(630) 233-5700 x119
Stone Mountain Access Systems, Inc.....	(708) 544-9010
Swanson, Martin & Bell, LLP.....	(312) 321-9100
Tarco.....	(800) 365-4506
The Horton Group.....	(708) 845-3000
Tilcor Roofing Systems.....	(224) 443-1817
TRUFAST.....	(800) 443-9602
Tuffwrap Installations, Inc.....	(815) 302-5280
United Asphalt Company.....	(800) 843-0317
United States Gypsum.....	(773) 213-6192
USI Insurance Services.....	(716) 314-2005
VB Synthetics.....	(312) 664-3810
Velux America.....	(864) 941-4770
Verde Solutions LLC.....	(800) 541-1137
Versico.....	(800) 992-7663
VFC Lightning Protection.....	(801) 292-2956
Viking Products Group.....	(800) 350-2142
Walter Payton Power Equipment LLC.....	(708) 656-7700
Westlake Royal Roofing Solutions.....	(612) 718-3514
WickRight, Inc./365 Construction Tents.....	(312) 720-1467
WindSmart, LLC.....	(800) 474-8186

Worthouse, Inc.....	(847) 621-2470
---------------------	----------------

Architects & Roof Consultants

ARCON Associates, Inc.....	(630) 495-1900
Building Envelope Consultants Ltd.....	(317) 432-1727
Building Technology Consultants, Inc.....	(847) 454-8800
C.E. Crowley & Associates, Inc.....	(847) 662-8132
Century Roof Consultants.....	(847) 202-8500
Flood Testing Labs, Inc.....	(773) 721-2200
Hutchinson Design Group, LLC.....	(312) 343-9595
Illinois Roof Consulting Associates Inc.....	(815) 385-6560
INSPEC, Inc.....	(847) 652-6617
Interstate Roof Systems Consultants, Inc.....	(847) 695-1460
K2N Crest.....	(630) 990-9595
Kellermeyer Godfryt Hart, P.C.....	(847) 318-0033
Klein and Hoffman, Inc.....	(312) 251-1979
Legat Architects.....	(630) 645-1906
Mac Brady Associates, Inc.....	(312) 550-1343
MTech Roofing Solutions LLC.....	(630) 777-8024
Raths, Raths and Johnson, Inc.....	(630) 325-6160
RCL Engineering Services.....	(847) 867-7093
SRI Consultants Inc.....	(608) 831-5333
STR Building Resources LLC.....	(847) 652-6115
YA Engineering Services.....	(312) 919-8279

Vacuuming

D&M Service Group.....	(816) 830-9432
Dietz Vacuum Service, Inc.....	(708) 301-9127
Ready Vac, Inc.....	(847) 437-5771
RK Hydro-Vac, Inc.....	(800) 754-9376
Vac-It-All Services, Inc.....	(314) 487-5600
Velocity Roof Vac Service Inc.....	(630) 936-2421

*** CRCA Sponsor Members. To learn more, visit
CRCA.org / CRCA Sponsors.**

**CRCA welcomes the following new members since the
Summer CRCA Today!**

Associate Members:

Continental Materials

NSS Exteriors

Contractor Members:

All In 1 Roofs

DRC Roofing & Construction

To learn more about these firms, visit www.CRCA.org to view the member list. Interested in being a member? Contact info@CRCA.org today!

SAVE TIME WITH THE **NEW** BEACON PRO+ MOBILE APP



**NOW IT'S EASIER TO MANAGE
YOUR BUSINESS ON THE GO**

BEACONPRO+



**EASIER PRODUCT
SEARCHES**



**CHECK INVOICES
& ORDER
HISTORY 24/7**



**SIMPLIFY
ORDERING WITH
TEMPLATES**

STREAMLINE YOUR DAILY TASKS



**TRACK
DELIVERIES**



**SHARE DELIVERY
INFORMATION**



**FIND A LOCAL
BRANCH**



DOWNLOAD THE **NEW
BEACON PRO+ MOBILE
APP TODAY AND
RECEIVE A \$10 DUNKIN'
GIFT CARD**

DUNKIN'

**HURRY, OFFER ENDS
DECEMBER 31, 2022**



BEACON